

International Edition v4.1

 **HOUSELINER[®]**
SYSTEM

SACPRO

RELINING INNOVATORS



PRODUCT CATALOG

MATERIALS, EQUIPMENT & TRAINING
TRENCHLESS PIPE REHABILITATION

HOUSELINER, PAGE 6

CONTENT

SACPRO PRODUCT CATALOG

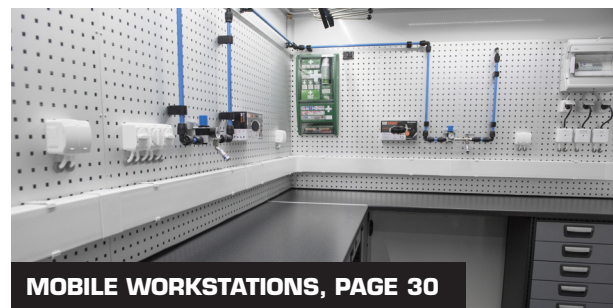
| | |
|--|----|
| PARTNERS | 3 |
| HOUSELINER SYSTEM | 4 |
| LINER | 6 |
| EPOXY | 8 |
| MIXING RATIOS & CURING TIMES | 10 |
| RESIN CONSUMPTION & ROLLER DISTANCE | 11 |
| BRANCH PIPES | 12 |
| CUSTOMIZED BRANCH PIPES | 15 |
| RELINING CONNECTION | 16 |
| BRANCHING CONNECTION | 17 |
| RAPTOR CUTTER | 18 |
| ACCESSORIES DRAIN CLEANING | 19 |
| SCALING CHAINS | 19 |
| INVERSION DRUMS | 20 |
| ACCESSORIES INVERSION DRUMS | 22 |
| HEAT CURING | 23 |
| BRANCH PIPE TOOLS | 24 |
| ACCESSORIES BRANCH PIPE TOOLS | 28 |
| IMPREGNATION UNITS | 29 |
| MOBILE WORKSTATIONS | 30 |
| CONSUMABLES | 32 |
| END CAP SYSTEM | 33 |
| TRAINING | 34 |
| ABOUT SACPRO | 35 |



RAPTOR CUTTER, PAGE 18



INVERSION DRUMS, PAGE 20



MOBILE WORKSTATIONS, PAGE 30

SACPRO

www.sacpro.se | www.sacpro.fi

SACPRO AB, Källviksvägen 10, SE-791 52 Falun, Sweden | +46 23 79 06 50 | info@sacpro.se

SACPRO PARTNERS

AROUND THE WORLD



VISIT OUR
WEBSHOP



<https://webshop.sacpro.se/shop>

GREEN MOLES

GREECE/CYPRUS
www.greenmoles.com

C J KELLY INTERNATIONAL LTD

UNITED KINGDOM
www.cjkelly.shop

AUSTRALIAN PIPELINING SUPPLIES

AUSTRALIA
www.pipelining-supplies.com.au

AMERICAN PIPELINING SUPPLIES

USA
www.apspipelining-supplies.com

Today Sacpro have partners in six different countries, and we are hoping to find more. We are building a group of partners around the world that wants to join us in our journey.

We believe it is a big benefit by collaborating close with our partners and we are working hard to support them.

With their knowledge of the market and our expertise in technology we form a great team.



- Our partners are extremely valuable to us and we support them by all means necessary.

Fredrik Sterner - CEO



MATERIALS, EQUIPMENT & TRAINING
TRENCHLESS PIPE REHABILITATION



HOUSELINER[®] SYSTEM



Houseliner System is a complete system for rehabilitation of sewer pipes in buildings. It is installed with inversion technology, both in horizontal and vertical pipes and through all bends and connections.

The material is cured inside the old pipes and creates a new self-supporting pipe systems with a durability that matches new PP pipe. Houseliner System consists of high quality resin, liners and Sacparts components.

HORIZONTAL AND VERTICAL SEWER PIPES

A pipe made by flexible liner always provide a predetermined wallthickness the entire lenght of the pipe. The liner in Houseliner System can be found in dimensions 30 - 400 mm and 2,5 - 5 mm thickness.

BENDS

The liner in Houseliner System is very flexible and can be installed in pipes with multiple bends up to 90° without disturbing wrinkles.

DIMENSIONAL CHANGES

Changes in diameter is a major challenge for many relining methods, but not for Houseliner System. The liner is so flexible that it makes it possible to install even though having several dimensional changes in the pipe.

BRANCH PIPES

The weakest point in a sewage system is usually the branches. When installing Houseliner System, prefabricated branch pipes are used, regardless of the size and design of branches.

BRANCHING CONNECTIONS

Branching connections can quickly and safely be installed using the Sacparts Branching Connection. Perfect to facilitate for example a new kitchen drain.

STANDARDIZED TRANSITIONS

Sacpart Relining Connection secures the transition from a conventional pipe to a renovated pipe.



SACPRO

www.sacpro.se | www.sacpro.fi

SACPRO AB, Källviksvägen 10, SE-791 52 Falun, Sweden | +46 23 79 06 50 | info@sacpro.se

CUSTOMER CASE

914 apartments in Norway

TOTAL AMOUNT INSTALLED:

- 3513 METER 4" LINER
- 214 VERTICAL PIPES
- 1354 SINGLE BRANCH PIPES
- 258 DOUBLE BRANCH PIPES
- 5270 KG EPOXI

One of many major projects that have chosen to work with the houseliner system is this housing association consisting of 914 apartments in Norway. The project lasted for about 2 years. There were 2 work teams that were there during the project. The teams worked side by side with one lining team and one spray coating team. The job ran at 3-week intervals. Because of stellar planning before the project started, all the installations were made with ambiently cured epoxy.

WEEK 1

- Monday, one stairwell with two vertical stacks were lined.
- Tuesday, lateral connections were milled up and four branch pipes were mounted. The vertical stacks of the next stairwell were cleaned and four branch pipes were changed to the next round.
- Wednesday, four branch pipes were installed. The next stairwells vertical stacks were closed off and lined. After that, the last four branch pipes were mounted in the first stairwell. Depending on when the branch pipes were installed, the residents got the water back within the next 12 hours.
- Thursday, the lateral connections were milled up and branch pipes were installed.
- Friday, eight branch pipes were installed and the residents got their water back within the next 12 hours.
- Saturday, the vertical stacks were put into operation. The upcoming vertical stacks were cleared for next week's work.

WEEK 2

- Monday, one stairwell was closed, liners were mounted with a 3,5-hour epoxy and milled out the same day.
- Tuesday, the next stairwell was closed off and lined with a 3,5-hour epoxy and milled the same day. Eight to twelve branch pipes were mounted in the first stairwell.
- Wednesday, twelve branch pipes were installed in the second stairwell and eight branch pipes were installed in the first stairwell, which is now ready to be put into use.
- Thursday the first stairwell, by the latest, was done and one round of branch pipes was installed in the second stairwell, which was then completed on Thursday afternoon.
- Friday, everything was filmed and the self-checks were filled in. During the work, a simplified self-check system was used with only the time, date, version of and epoxy amount for liners and branch pipes. Then we went home to have a week of "down time" before everything started over again.

- I was part of this exciting project in Norway and spent two years there. Of all those branch pipes there were only six we had to re do.

Jockum Brodén
- Head of Research & Development



LINER SYSTEM

HOUSELINER

Our flexible liners are the basis for a self-supporting piping system, that can handle both dimensional changes and 90° bends with an absolute minimum of wrinkles. Combined with our Houseliner Resin the new sewer pipes will get a predetermined wall thickness of your choice. The new pipes have high E-modulus and chemically resistant after curing. The characteristics are much like a new, conventionally made PP sewer pipe.

Houseliner FL and FLT combined with Houseliner Resin are both tested for life expectancy at Eurofins. The test showed that you can expect more than 50% of the initial strength after 50 years of service.

- **CR072** approved according to RISE's standard in Sweden.
- **ASTM** approved according to USA standards.
- **VTT** approved according to Eurofins standards in Finland.



LINER

FLT

Houseliner FLT gives you a near perfect result. Made for DN50 to DN150, all with the same thickness after curing, approximately 2 mm. Made from 100% PES fiber with a PU coating. Suitable for ambient, hot water, UV, or steam curing up to 70°C. Changes in diameter or 90° bends is no match for this liner. This liner is perfect for domestic pipes, or pipes where there is limited demand for ring stiffness.

The ease to wet out, combined with low resin usage, gives you more time to install your liner instead of spending time at your wet-out table.

LINER FLT

| Liner FLT | |
|------------|-------------------------------|
| HL-FLT-051 | Houseliner FLT 50-70 (100m) |
| HL-FLT-100 | Houseliner FLT 60-90 (100m) |
| HL-FLT-055 | Houseliner FLT 70-100 (100m) |
| HL-FLT-120 | Houseliner FLT 90-125 (100m) |
| HL-FLT-060 | Houseliner FLT 100-150 (100m) |

LINER

FL



Houseliner FL is your go-to liner. It comes in a variety of sizes and thicknesses to suite your needs. From DN30 all the way to DN400. Wall thickness from 2,5 to 5mm depending on your choice of liner. Made from 100% PES fiber with a TPU coating. Suitable for ambient, UV or hot water curing up to 80°C.

Houseliner FL can handle up to 90° bends and changes in diameter. Whatever your needs may be, Houseliner FL can almost for certain fulfill your demands. The wet-out process is extremely fast, giving you more time to invert then spending time at the wet-out table.

Liner FL 2.5mm

| | |
|------------|------------------------------------|
| HL-FL-3525 | Houseliner FL 2.5mm 30-50 (25m) |
| HL-FL-3570 | Houseliner FL 2.5mm 40-60 (50m) |
| HL-FL-3625 | Houseliner FL 2.5mm 45-70 (50m) |
| HL-FL-3725 | Houseliner FL 2.5mm 50-70 (50m) |
| HL-FL-3750 | Houseliner FL 2.5mm 63-75 (50m) |
| HL-FL-3760 | Houseliner FL 2.5mm 70-100 (100m) |
| HL-FL-4800 | Houseliner FL 2.5mm 90-125 (100m) |
| HL-FL-3770 | Houseliner FL 2.5mm 100-150 (100m) |
| HL-FL-3780 | Houseliner FL 2.5mm 110-160 (100m) |

Liner FL 4mm

| | |
|--------------|----------------------------------|
| HL-FL-5540 | Houseliner FL 4mm 63-100 (100m) |
| HL-FL-5640 | Houseliner FL 4mm 70-100 (100m) |
| HL-FL-3765 | Houseliner FL 4mm 80-110 (100m) |
| HL-FL-5650 | Houseliner FL 4mm 90-125 (100m) |
| HL-FL-5740 | Houseliner FL 4mm 100-150 (100m) |
| HL-FL-5740,1 | Houseliner FL 4mm 100-150 (50m) |
| HL-FL-5800 | Houseliner FL 4mm 120-150 (100m) |
| HL-FL-5840 | Houseliner FL 4mm 150-225 (100m) |
| HL-FL-5840,1 | Houseliner FL 4mm 150-225 (50m) |

Liner FIX 3mm

| | |
|--------------|-------------------------------|
| HL-FL-7620 | Houseliner FIX 3mm 75 (100m) |
| HL-FL-7650 | Houseliner FIX 3mm 100 (100m) |
| HL-FL-7650,1 | Houseliner FIX 3mm 100 (50m) |
| HL-FL-7670 | Houseliner FIX 3mm 150 (100m) |
| HL-FL-7670,1 | Houseliner FIX 3mm 150 (50m) |

Liner FIX 5mm

| | |
|------------|-------------------------------|
| HL-FL-7675 | Houseliner FIX 5mm 150 (100m) |
| HL-FL-7680 | Houseliner FIX 5mm 225 (100m) |

Liner FL 3mm

| | |
|--------------|----------------------------------|
| HL-FL-4525 | Houseliner FL 3mm 30-50 (50m) |
| HL-FL-4530 | Houseliner FL 3mm 45-70 (50m) |
| HL-FL-4630 | Houseliner FL 3mm 50-70 (50m) |
| HL-FL-4600 | Houseliner FL 3mm 60-75 (50m) |
| HL-FL-4615 | Houseliner FL 3mm 63-75 (50m) |
| HL-FL-4730 | Houseliner FL 3mm 63-100 (100m) |
| HL-FL-4730,1 | Houseliner FL 3mm 63-100 (50m) |
| HL-FL-4830 | Houseliner FL 3mm 70-100 (100m) |
| HL-FL-4830,1 | Houseliner FL 3mm 70-100 (50m) |
| HL-FL-4900 | Houseliner FL 3mm 90-125 (100m) |
| HL-FL-7660 | Houseliner FL 3mm 100-120 (100m) |
| HL-FL-4930 | Houseliner FL 3mm 100-150 (100m) |
| HL-FL-4930,1 | Houseliner FL 3mm 100-150 (50m) |

Liner FL 5mm

| | |
|--------------|----------------------------------|
| HL-FL-6550 | Houseliner FL 5mm 150-225 (100m) |
| HL-FL-6550,1 | Houseliner FL 5mm 150-225 (50m) |
| HL-FL-6650 | Houseliner FL 5mm 200-250 (100m) |
| HL-FL-6700 | Houseliner FL 5mm 225-300 (100m) |
| HL-FL-6700,1 | Houseliner FL 5mm 225-300 (50m) |
| HL-FL-6750 | Houseliner FL 5mm 250-300 (100m) |
| HL-FL-6850 | Houseliner FL 5mm 300-400 (100m) |

Liner FIX 4mm

| | |
|------------|-------------------------------|
| HL-FL-7652 | Houseliner FIX 4mm 100 (100m) |
| HL-FL-7671 | Houseliner FIX 4mm 150 (100m) |
| HL-FL-7679 | Houseliner FIX 4mm 225 (100m) |

- Extremely fast wet-out process, long working time in relation to curing time, gives you the possibility to make more installations per day

Markus Matsson - Sales & Order



EPOXY

Resin Base, Ultra, Fast, Medium, Slow and Hot Cure



Our range of epoxy resin is tailored to suit most liners. Both woven and felt liner are able to use Houseliner resin.

There are five different curing agents to suit your needs.

Ultra – cures in 2 hours at 20°Celcius, but still gives you approx. 16 minutes of working time.

Fast – cures in 3 hours at 20°Celcius, but still gives you approx. 18 minutes of working time.

Medium – cures in 6 hours at 20°Celcius, and gives you approx. 42 minutes of working time.

Slow – cures in 12 hours at 20°Celcius, and gives you approx. 3 hours of working time.

Hot Cure – made for steam or hot water curing with a high temperature resistance. Working time approx. 70 minutes.

All our curing agents are paired with Houseliner Resin Base. Ultra, Fast, Medium, and Slow are mixable with each other if preferred, or needed, as they all have the same mixing ratio.

Houseliner Resin releases no environmentally hazardous substances when fully cured.

The color is bright orange, making it easy to see when the liner is saturated. Other benefits are that you easily can spot small drops, and identify the liner as a Houseliner product after curing.

Houseliner resin is tracked by Batch No. and the shelf life is expected to be at least 18 months from production date.

Epoxy 1,54 kg

| | |
|------------|---|
| HL-RM-1515 | Medium Hardener 0,44 kg and Resin Base 1,1 kg |
| HL-RF-1510 | Fast Hardener 0,44 kg and Resin Base 1,1 kg |
| HL-RU-1440 | Ultra Hardener 0,44 kg and Resin Base 1,1 kg |



Epoxy 7,7 kg (6,93 kg)

| | |
|------------|---------------------------|
| HL-RS-1500 | Slow Hardener 2,2 kg |
| HL-RM-1500 | Medium Hardener 2,2 kg |
| HL-RF-1490 | Fast Hardener 2,2 kg |
| HL-RU-1430 | Ultra Hardener 2,2 kg |
| HL-RH-1270 | Hot Cure Hardener 1,43 kg |
| HL-BA-002 | Resin Base 5,5 kg |

ULTRA HARDENER
Cures in 2 hours at 20°C
Approx. 16 min working time



Epoxy 14 kg (12,6 kg)

| | |
|------------|--------------------------|
| HL-RS-1420 | Slow Hardener 4,0 kg |
| HL-RM-1415 | Medium Hardener 4,0 kg |
| HL-RF-1410 | Fast Hardener 4,0 kg |
| HL-RU-1420 | Ultra Hardener 4,0 kg |
| HL-RH-1260 | Hot Cure Hardener 2,6 kg |
| HL-BA-001 | Resin Base 10 kg |

SHAKE 2H

To minimize the shrinkage and to get all the properties from an epoxy for your packer installations, the Houseliner Shake 2h is finally here.

Shake 2h comes in two bottles with two different colors for the base and the curing agency. When mixed and Shaked by hand a new color will occur, that's when you know it's ready to be used. Shake 2h has a fast curing time, and can be used for installations of packers, short repairs and junctions.

During the development we have had companies from different countries giving us feedback, and we are really satisfied with the end result.

SHAKE 2H

| | |
|------------|-----------------------------|
| HL-RU-1460 | Houseliner Shake 2h 0,91 kg |
|------------|-----------------------------|



Mixing ratios for Houseliner Epoxy

| Weight in KG | ULTRA, FAST, MEDIUM and SLOW | | HOT CURE | |
|--------------|------------------------------|-------------------|---------------|-------------------|
| | Base in GRAMS | Hardener in GRAMS | Base in GRAMS | Hardener in GRAMS |
| 1 | 714 | 286 | 794 | 206 |
| 2 | 1429 | 571 | 1587 | 413 |
| 3 | 2143 | 857 | 2381 | 619 |
| 4 | 2857 | 1143 | 3175 | 825 |
| 5 | 3571 | 1429 | 3968 | 1032 |
| 6 | 4286 | 1714 | 4762 | 1238 |
| 7 | 5000 | 2000 | 5556 | 1444 |
| 8 | 5714 | 2286 | 6349 | 1651 |
| 9 | 6429 | 2571 | 7143 | 1857 |
| 10 | 7143 | 2857 | 7937 | 2063 |
| 11 | 7857 | 3143 | 8730 | 2270 |
| 12 | 8571 | 3429 | 9524 | 2476 |
| 13 | 9286 | 3714 | 10317 | 2683 |
| 14 | 10000 | 4000 | 11111 | 2889 |
| 15 | 10714 | 4286 | 11905 | 3095 |
| 16 | 11429 | 4571 | 12698 | 3302 |
| 17 | 12143 | 4857 | 13492 | 3508 |
| 18 | 12857 | 5143 | 14286 | 3714 |
| 19 | 13571 | 5429 | 15079 | 3921 |
| 20 | 14286 | 5714 | 15873 | 4127 |
| 21 | 15000 | 6000 | 16667 | 4333 |
| 22 | 15714 | 6286 | 17460 | 4540 |
| 23 | 16429 | 6571 | 18254 | 4746 |
| 24 | 17143 | 6857 | 19048 | 4952 |
| 25 | 17857 | 7143 | 19841 | 5159 |
| 26 | 18571 | 7429 | 20635 | 5365 |
| 27 | 19286 | 7714 | 21429 | 5571 |
| 28 | 20000 | 8000 | 22222 | 5778 |

Resin curing and working times

| Curing times | | | | | |
|--------------|-------|-------|--------|-------|----------|
| Temperature | ULTRA | FAST | MEDIUM | SLOW | HOT CURE |
| + 10°C | 4h | 6h | 12h | 24h | 36h |
| + 20°C | 2h | 3h | 6h | 12h | 18h |
| + 30°C | 1h | 90min | 3h | 6h | 9h |
| + 40°C | 30min | 50min | 90min | 3,5h | 5h |
| + 50°C | 15min | 30min | 50min | 2h | 3h |
| + 60°C | 15min | 30min | 30min | 75min | 2h |
| + 70°C | 15min | 30min | 30min | 50min | 90min |

Approximately working times at + 20°C

| ULTRA | FAST | MEDIUM | SLOW | HOT CURE |
|-------|-------|--------|------|----------|
| 16min | 18min | 42min | 3h | 1h 10min |

Note:

The Ultra and Fast resin may heat up to very high temperatures if left in large quantities. Be careful with the leftover resin. Minimal required curing temperature is + 10°C

Resin consumption and roller distance metric

| ARTICLE | HOUSELINER FL 2.5 mm | DN 30-50 | DN 40-60 | DN 45-70 | DN 50-70 | DN 63-75 | DN 70-100 | DN 90-125 | DN 100-150 | DN 110-160 | |
|---|----------------------|------------|------------|------------|------------|------------|------------|------------|------------|------------|------------|
| RESIN CONSUMPTION ULTRA, FAST, MEDIUM, SLOW & HOT CURE PER LINER METER: | | 0.26 kg | 0.35 kg | 0.40 kg | 0.40 kg | 0.55 kg | 0.61 kg | 0.77 kg | 0.83 kg | 0.92 kg | |
| HOUSELINER UV EPOXY & BRAWO LR PER LINER METER: | | 0.28 kg | 0.37 kg | 0.43 kg | 0.43 kg | 0.58 kg | 0.65 kg | 0.82 kg | 0.88 kg | 0.99 kg | |
| ROLLER DISTANCE OF THE IMPREGNATION PLANT: | | 5.5 mm | 5.5 mm | 5.5 mm | 5.5 mm | 5.5 mm | 5.5 mm | 5.5 mm | 5.5 mm | 5.5 mm | |
| ARTICLE | HOUSELINER FL 3 mm | DN 30-50 | DN 45-70 | DN 50-70 | DN 60-75 | DN 63-75 | DN 63-100 | DN 70-100 | DN 90-125 | DN 100-120 | DN 100-150 |
| RESIN CONSUMPTION ULTRA, FAST, MEDIUM, SLOW & HOT CURE PER LINER METER: | | 0.29 kg | 0.48 kg | 0.47 kg | 0.55 kg | 0.57 kg | 0.61 kg | 0.70 kg | 0.91 kg | 1.01 kg | 1.01 kg |
| HOUSELINER UV EPOXY & BRAWO LR PER LINER METER: | | 0.31 kg | 0.52 kg | 0.50 kg | 0.58 kg | 0.60 kg | 0.65 kg | 0.75 kg | 0.97 kg | 1.08 kg | 1.08 kg |
| ROLLER DISTANCE OF THE IMPREGNATION PLANT: | | 6.5 mm | 6.5 mm | 6.5 mm | 6.5 mm | 6.5 mm | 6.5 mm | 6.5 mm | 6.5 mm | 6.5 mm | 6.5 mm |
| ARTICLE | HOUSELINER FL 4 mm | DN 63-100 | DN 70-100 | DN 80-110 | DN 90-125 | DN 100-150 | DN 120-150 | DN 150-225 | | | |
| RESIN CONSUMPTION ULTRA, FAST, MEDIUM, SLOW & HOT CURE PER LINER METER: | | 0.83 kg | 0.92 kg | 1.09 kg | 1.16 kg | 1.31 kg | 1.53 kg | 2.02 kg | | | |
| HOUSELINER UV EPOXY & BRAWO LR PER LINER METER: | | 0.88 kg | 0.99 kg | 1.16 kg | 1.23 kg | 1.40 kg | 1.64 kg | 2.15 kg | | | |
| ROLLER DISTANCE OF THE IMPREGNATION PLANT: | | 8.5 mm | 8.5 mm | 8.5 mm | 8.5 mm | 8.5 mm | 8.5 mm | 8.5 mm | | | |
| ARTICLE | HOUSELINER FL 5 mm | DN 150-225 | DN 200-250 | DN 225-300 | DN 250-300 | DN 300-400 | | | | | |
| RESIN CONSUMPTION ULTRA, FAST, MEDIUM, SLOW & HOT CURE PER LINER METER: | | 2.02 kg | 3.23 kg | 3.85 kg | 4.28 kg | 5.02 kg | | | | | |
| HOUSELINER UV EPOXY & BRAWO LR PER LINER METER: | | 2.15 kg | 3.45 kg | 4.11 kg | 4.57 kg | 5.35 kg | | | | | |
| ROLLER DISTANCE OF THE IMPREGNATION PLANT: | | 10.5 mm | 10.5 mm | 10.5 mm | 10.5 mm | 10.5 mm | | | | | |
| ARTICLE | HOUSELINER FIX 3 mm | DN 75 | DN 100 | DN 150 | | | | | | | |
| RESIN CONSUMPTION ULTRA, FAST, MEDIUM, SLOW & HOT CURE PER LINER METER: | | 0.66 kg | 0.83 kg | 1.31 kg | | | | | | | |
| HOUSELINER UV EPOXY & BRAWO LR PER LINER METER: | | 0.71 kg | 0.88 kg | 1.40 kg | | | | | | | |
| ROLLER DISTANCE OF THE IMPREGNATION PLANT: | | 6.5 mm | 6.5 mm | 6.5 mm | | | | | | | |
| ARTICLE | HOUSELINER FIX 4 mm | DN 100 | DN 150 | DN 225 | | | | | | | |
| RESIN CONSUMPTION ULTRA, FAST, MEDIUM, SLOW & HOT CURE PER LINER METER: | | 1.37 kg | 1.92 kg | 2.93 kg | | | | | | | |
| HOUSELINER UV EPOXY & BRAWO LR PER LINER METER: | | 1.46 kg | 2.05 kg | 3.12 kg | | | | | | | |
| ROLLER DISTANCE OF THE IMPREGNATION PLANT: | | 8.5 mm | 8.5 mm | 8.5 mm | | | | | | | |
| ARTICLE | HOUSELINER FIX 5 mm | DN 150 | DN 225 | | | | | | | | |
| RESIN CONSUMPTION ULTRA, FAST, MEDIUM, SLOW & HOT CURE PER LINER METER: | | 2.48 kg | 3.59 kg | | | | | | | | |
| HOUSELINER UV EPOXY & BRAWO LR PER LINER METER: | | 2.64 kg | 3.83 kg | | | | | | | | |
| ROLLER DISTANCE OF THE IMPREGNATION PLANT: | | 10.5 mm | 10.5 mm | | | | | | | | |
| ARTICLE | HOUSELINER FLT | DN 50-70 | DN 60-90 | DN 70-100 | DN 90-125 | DN 100-150 | | | | | |
| RESIN CONSUMPTION ULTRA, FAST, MEDIUM, SLOW & HOT CURE PER LINER METER: | | 0.42 kg | 0.50 kg | 0.61 kg | 0.78 kg | 0.81 kg | | | | | |
| HOUSELINER UV EPOXY & BRAWO LR PER LINER METER: | | 0.45 kg | 0.54 kg | 0.65 kg | 0.83 kg | 0.86 kg | | | | | |
| ROLLER DISTANCE OF THE IMPREGNATION PLANT: | | 7 mm | 7 mm | 7 mm | 7 mm | 7 mm | | | | | |

Resin consumption and roller distance imperial

| ARTICLE | HOUSELINER FL 2.5 mm | DN 30-50 | DN 40-60 | DN 45-70 | DN 50-70 | DN 63-75 | DN 70-100 | DN 90-125 | DN 100-150 | DN 110-160 | |
|--|----------------------|------------|------------|------------|------------|------------|------------|------------|------------|------------|------------|
| RESIN CONSUMPTION ULTRA, FAST, MEDIUM, SLOW & HOT CURE PER LINER FEET: | | 0.176 lbs | 0.233 lbs | 0.268 lbs | 0.268 lbs | 0.367 lbs | 0.409 lbs | 0.515 lbs | 0.557 lbs | 0.621 lbs | |
| HOUSELINER UV EPOXY & BRAWO LR PER LINER FEET: | | 0.188 lbs | 0.248 lbs | 0.286 lbs | 0.286 lbs | 0.391 lbs | 0.437 lbs | 0.549 lbs | 0.595 lbs | 0.662 lbs | |
| ROLLER DISTANCE OF THE IMPREGNATION PLANT: | | 0.2165 in | 0.2165 in | 0.2165 in | 0.2165 in | 0.2165 in | 0.2165 in | 0.2165 in | 0.2165 in | 0.2165 in | |
| ARTICLE | HOUSELINER FL 3 mm | DN 30-50 | DN 45-70 | DN 50-70 | DN 60-75 | DN 63-75 | DN 63-100 | DN 70-100 | DN 90-125 | DN 100-120 | DN 100-150 |
| RESIN CONSUMPTION ULTRA, FAST, MEDIUM, SLOW & HOT CURE PER LINER FEET: | | 0.198 lbs | 0.325 lbs | 0.318 lbs | 0.367 lbs | 0.381 lbs | 0.409 lbs | 0.473 lbs | 0.614 lbs | 0.677 lbs | 0.677 lbs |
| HOUSELINER UV EPOXY & BRAWO LR PER LINER FEET: | | 0.211 lbs | 0.346 lbs | 0.339 lbs | 0.391 lbs | 0.406 lbs | 0.437 lbs | 0.504 lbs | 0.655 lbs | 0.723 lbs | 0.723 lbs |
| ROLLER DISTANCE OF THE IMPREGNATION PLANT: | | 0.2559 in | 0.2559 in | 0.2559 in | 0.2559 in | 0.2559 in | 0.2559 in | 0.2559 in | 0.2559 in | 0.2559 in | 0.2559 in |
| ARTICLE | HOUSELINER FL 4 mm | DN 63-100 | DN 70-100 | DN 80-110 | DN 90-125 | DN 100-150 | DN 120-150 | DN 150-225 | | | |
| RESIN CONSUMPTION ULTRA, FAST, MEDIUM, SLOW & HOT CURE PER LINER FEET: | | 0.557 lbs | 0.621 lbs | 0.734 lbs | 0.776 lbs | 0.882 lbs | 1.030 lbs | 1.355 lbs | | | |
| HOUSELINER UV EPOXY & BRAWO LR PER LINER FEET: | | 0.595 lbs | 0.662 lbs | 0.783 lbs | 0.828 lbs | 0.941 lbs | 1.099 lbs | 1.445 lbs | | | |
| ROLLER DISTANCE OF THE IMPREGNATION PLANT: | | 0.3346 in | 0.3346 in | 0.3346 in | 0.3346 in | 0.3346 in | 0.3346 in | 0.3346 in | | | |
| ARTICLE | HOUSELINER FL 5 mm | DN 150-225 | DN 200-250 | DN 225-300 | DN 250-300 | DN 300-400 | | | | | |
| RESIN CONSUMPTION ULTRA, FAST, MEDIUM, SLOW & HOT CURE PER LINER FEET: | | 1.355 lbs | 2.173 lbs | 2.589 lbs | 2.879 lbs | 3.373 lbs | | | | | |
| HOUSELINER UV EPOXY & BRAWO LR PER LINER FEET: | | 1.445 lbs | 2.318 lbs | 2.762 lbs | 3.071 lbs | 3.597 lbs | | | | | |
| ROLLER DISTANCE OF THE IMPREGNATION PLANT: | | 0.4134 in | 0.4134 in | 0.4134 in | 0.4134 in | 0.4134 in | | | | | |
| ARTICLE | HOUSELINER FIX 3 mm | DN 75 | DN 100 | DN 150 | | | | | | | |
| RESIN CONSUMPTION ULTRA, FAST, MEDIUM, SLOW & HOT CURE PER LINER FEET: | | 0.445 lbs | 0.557 lbs | 0.882 lbs | | | | | | | |
| HOUSELINER UV EPOXY & BRAWO LR PER LINER FEET: | | 0.474 lbs | 0.595 lbs | 0.941 lbs | | | | | | | |
| ROLLER DISTANCE OF THE IMPREGNATION PLANT: | | 0.2559 in | 0.2559 in | 0.2559 in | | | | | | | |
| ARTICLE | HOUSELINER FIX 4 mm | DN 100 | DN 150 | DN 225 | | | | | | | |
| RESIN CONSUMPTION ULTRA, FAST, MEDIUM, SLOW & HOT CURE PER LINER FEET: | | 0.917 lbs | 1.291 lbs | 1.969 lbs | | | | | | | |
| HOUSELINER UV EPOXY & BRAWO LR PER LINER FEET: | | 0.978 lbs | 1.377 lbs | 2.100 lbs | | | | | | | |
| ROLLER DISTANCE OF THE IMPREGNATION PLANT: | | 0.3346 in | 0.3346 in | 0.3346 in | | | | | | | |
| ARTICLE | HOUSELINER FIX 5 mm | DN 150 | DN 225 | | | | | | | | |
| RESIN CONSUMPTION ULTRA, FAST, MEDIUM, SLOW & HOT CURE PER LINER FEET: | | 1.665 lbs | 1.776 lbs | | | | | | | | |
| HOUSELINER UV EPOXY & BRAWO LR PER LINER FEET: | | 2.413 lbs | 2.574 lbs | | | | | | | | |
| ROLLER DISTANCE OF THE IMPREGNATION PLANT: | | 0.4134 in | 0.4134 in | | | | | | | | |
| ARTICLE | HOUSELINER FLT | DN 50-70 | DN 60-90 | DN 70-100 | DN 90-125 | DN 100-150 | | | | | |
| RESIN CONSUMPTION ULTRA, FAST, MEDIUM, SLOW & HOT CURE PER LINER FEET: | | 0.282 lbs | 0.339 lbs | 0.409 lbs | 0.522 lbs | 0.543 lbs | | | | | |
| HOUSELINER UV EPOXY & BRAWO LR PER LINER FEET: | | 0.301 lbs | 0.361 lbs | 0.437 lbs | 0.557 lbs | 0.580 lbs | | | | | |
| ROLLER DISTANCE OF THE IMPREGNATION PLANT: | | 0.2756 in | 0.2756 in | 0.2756 in | 0.2756 in | 0.2756 in | | | | | |


BRANCH PIPE 45°

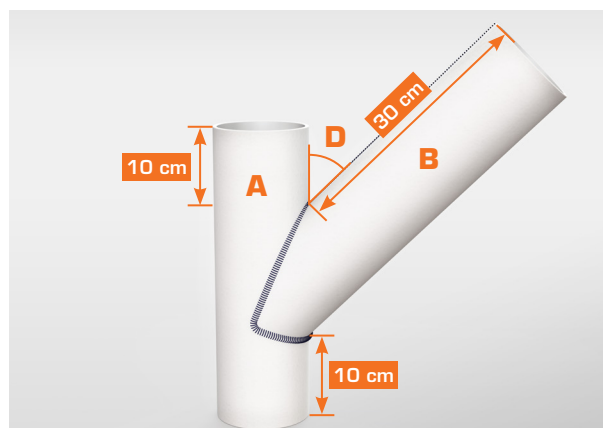
BRANCH PIPES

Installing branch pipes will give you a superior advantage and guarantee the quality for many years. Sacparts provide a form-fitting solution for lateral and horizontal pipe connections. When using our branch pipe tools and a form fitted branch pipe a quick, easy, and reliable renovation will be achieved, even on sewer pipes in poor condition.

- Form-fitted branch pipes for renovation of existing branch pipes.
- Standard DN sizes are from 70 mm up to 225 mm in the main pipe.
- DN from 50 mm up to 225 mm in the branch line connection.
- Standard length of the connection is 30 cm regardless of branch pipe dimensions.
- Flexible and secure connection
- For a leak-free and easy installation.

CUSTOMIZED BRANCH PIPES

In addition to our standard products we also manufacture and develop branch pipes and branch pipe tools to meet our customer's needs.



HOW TO BUY THE RIGHT BRANCH PIPE

We have a lot of branch pipe standards in stock. Our standard branch pipes have 30 cm lateral pipe and 10 cm main pipe above and below the connection to the lateral pipe.

How we name our standard branch pipes:

SP Branch Pipe **A/B-D**

A: Diameter main pipe, e.g. Ø 100 mm

B: Diameter lateral pipe, e.g. Ø 100 mm

D: Angle between main and lateral pipe, e.g. 45°

Branch pipe on the illustration above is named:

SP Branch Pipe 100/100-45

Double and corner branch pipes:

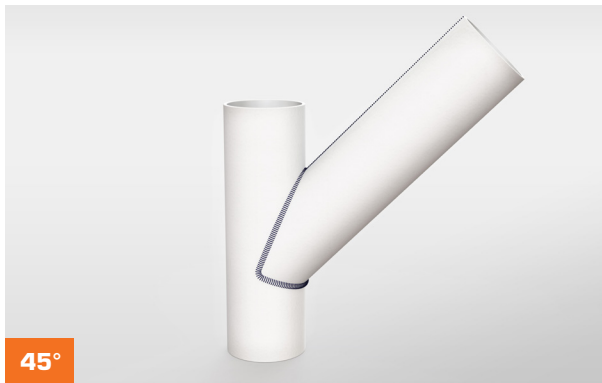
SP Branch Pipe **A/B₁+B₂-D TYPE**

B₁ and B₂: Diameter lateral pipes

TYPE: Type of branch pipe, **double** or **corner**

An example of a standard branch pipe double:

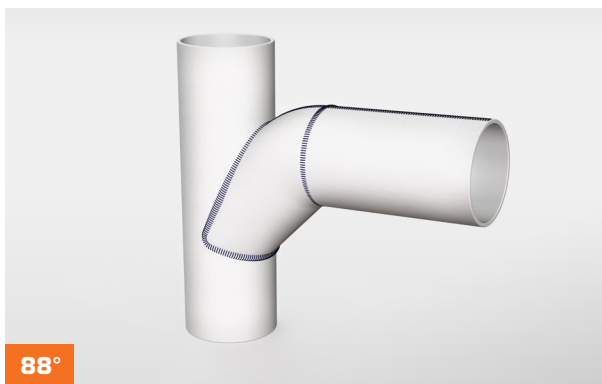
SP Branch Pipe 100/100+100-45 Double



45°

Branch Pipes 45°

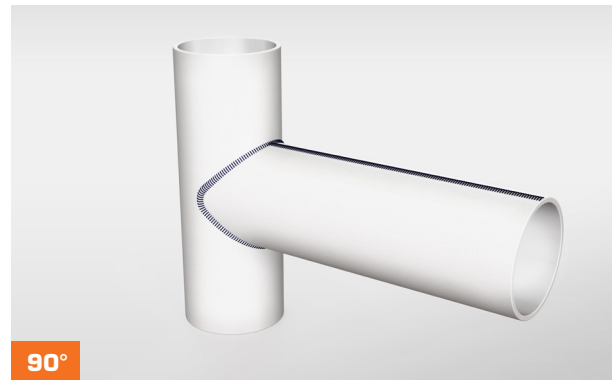
| | |
|--------------|----------------------------|
| S1-231-045 | SP Branch Pipe 75/75-45 |
| S1-230-50-45 | SP Branch Pipe 90/50-45 |
| S1-232-005 | SP Branch Pipe 100/50-45 |
| S1-232-045PP | SP Branch Pipe 100/50-45PP |
| S1-232-007 | SP Branch Pipe 100/60-45 |
| S1-232-010 | SP Branch Pipe 100/63-45 |
| S1-232-045 | SP Branch Pipe 100/75-45 |
| S1-232,5-045 | SP Branch Pipe 100/90-45 |
| S1-233-045 | SP Branch Pipe 100/100-45 |
| S1-236-045 | SP Branch Pipe 125/60-45 |
| S1-236-7545 | SP Branch Pipe 125/75-45 |
| S1-237-045 | SP Branch Pipe 125/100-45 |
| S1-238-045 | SP Branch Pipe 125/125-45 |
| S1-241-045 | SP Branch Pipe 150/75-45 |
| S1-242-045 | SP Branch Pipe 150/100-45 |
| S1-2421-45 | SP Branch Pipe 150/125-45 |
| S1-243-045 | SP Branch Pipe 150/150-45 |
| S1-248-045 | SP Branch Pipe 200/75-45 |
| S1-249-045 | SP Branch Pipe 200/100-45 |
| S1-2491-045 | SP Branch Pipe 200/125-45 |
| S1-250-045 | SP Branch Pipe 200/150-45 |
| S1-251-045 | SP Branch Pipe 200/200-45 |
| S1-244-045 | SP Branch Pipe 225/75-45 |
| S1-245-045 | SP Branch Pipe 225/100-45 |
| S1-2451-045 | SP Branch Pipe 225/125-45 |
| S1-246-045 | SP Branch Pipe 225/150-45 |
| S1-247-045 | SP Branch Pipe 225/225-45 |



88°

Branch Pipes 88°

| | |
|------------|-----------------------------|
| S1-231-088 | SP Branch Pipe 75/75-88 |
| S1-232-006 | SP Branch Pipe 100/50-88 |
| S1-232-020 | SP Branch Pipe 100/63-88 |
| S1-232-088 | SP Branch Pipe 100/75-88 |
| S1-233-088 | SP Branch Pipe 100/100-88 |
| S1-233-188 | SP Branch Pipe 100/100-88PP |
| S1-241-088 | SP Branch Pipe 150/75-88 |
| S1-242-088 | SP Branch Pipe 150/100-88 |
| S1-243-088 | SP Branch Pipe 150/150-88 |
| S1-248-088 | SP Branch Pipe 200/75-88 |
| S1-249-088 | SP Branch Pipe 200/100-88 |
| S1-250-088 | SP Branch Pipe 200/150-88 |
| S1-244-088 | SP Branch Pipe 225/75-88 |
| S1-245-088 | SP Branch Pipe 225/100-88 |
| S1-246-088 | SP Branch Pipe 225/150-88 |
| S1-247-088 | SP Branch Pipe 225/225-88 |



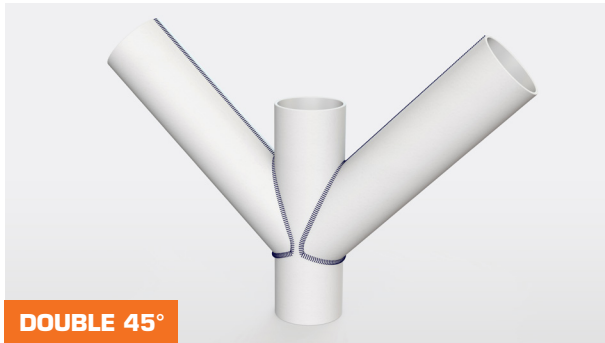
90°

Branch Pipes 90°

| | |
|---------------|----------------------------|
| S1-231-090 | SP Branch Pipe 75/75-90 |
| S1-230-90 | SP Branch Pipe 90/90-90 |
| S1-230-100-90 | SP Branch Pipe 90/100-90 |
| S1-232-004 | SP Branch Pipe 100/50-90 |
| S1-232-090PP | SP Branch Pipe 100/50-90PP |
| S1-232-008 | SP Branch Pipe 100/60-90 |
| S1-232-021 | SP Branch Pipe 100/63-90 |
| S1-232-090 | SP Branch Pipe 100/75-90 |
| S1-232,5-090 | SP Branch Pipe 100/90-90 |
| S1-233-090 | SP Branch Pipe 100/100-90 |
| S1-236-090 | SP Branch Pipe 125/60-90 |
| S1-236-7590 | SP Branch Pipe 125/75-90 |
| S1-237-090 | SP Branch Pipe 125/100-90 |
| S1-238-090 | SP Branch Pipe 125/125-90 |
| S1-241-090 | SP Branch Pipe 150/75-90 |
| S1-242-090 | SP Branch Pipe 150/100-90 |
| S1-2421-90 | SP Branch Pipe 150/125-90 |
| S1-243-090 | SP Branch Pipe 150/150-90 |
| S1-249-090 | SP Branch Pipe 200/100-90 |

Branch Pipes 90°

| | |
|-------------|---------------------------|
| S1-2491-090 | SP Branch Pipe 200/125-90 |
| S1-250-090 | SP Branch Pipe 200/150-90 |
| S1-251-090 | SP Branch Pipe 200/200-90 |
| S1-245-090 | SP Branch Pipe 225/100-90 |
| S1-2451-090 | SP Branch Pipe 225/125-90 |
| S1-246-090 | SP Branch Pipe 225/150-90 |
| S1-247-090 | SP Branch Pipe 225/225-90 |


DOUBLE 45°
Branch Pipes Double 45°

| | |
|-------------|---------------------------------------|
| S1-232-045D | SP Branch Pipes 100/75+75-45 Double |
| S1-234-145D | SP Branch Pipes 100/100+75-45 Double |
| S1-234-045D | SP Branch Pipes 100/100+100-45 Double |
| S1-237-045D | SP Branch Pipes 125/75+75-45 Double |
| S1-242-045D | SP Branch Pipes 150/100+100-45 Double |


DOUBLE 88°
Branch Pipes Double 88°

| | |
|-------------|--------------------------------------|
| S1-232-088D | SP Branch Pipe 100/75+75-88 Double |
| S1-234-188D | SP Branch Pipe 100/100+75-88 Double |
| S1-234-088D | SP Branch Pipe 100/100+100-88 Double |
| S1-242-088D | SP Branch Pipe 150/100+100-88 Double |


DOUBLE 90°
Branch Pipes Double 90°

| | |
|-------------|--------------------------------------|
| S1-236-090D | SP Branch Pipe 100/50+50-90 Double |
| S1-239-090D | SP Branch Pipe 100/100+75-90 Dubbel |
| S1-234-090D | SP Branch Pipe 100/100+100-90 Double |
| S1-237-090D | SP Branch Pipe 125/75+75-90 Double |
| S1-242-090D | SP Branch Pipe 150/100+100-90 Double |


CORNER 45°
Branch Pipes Corner 45°

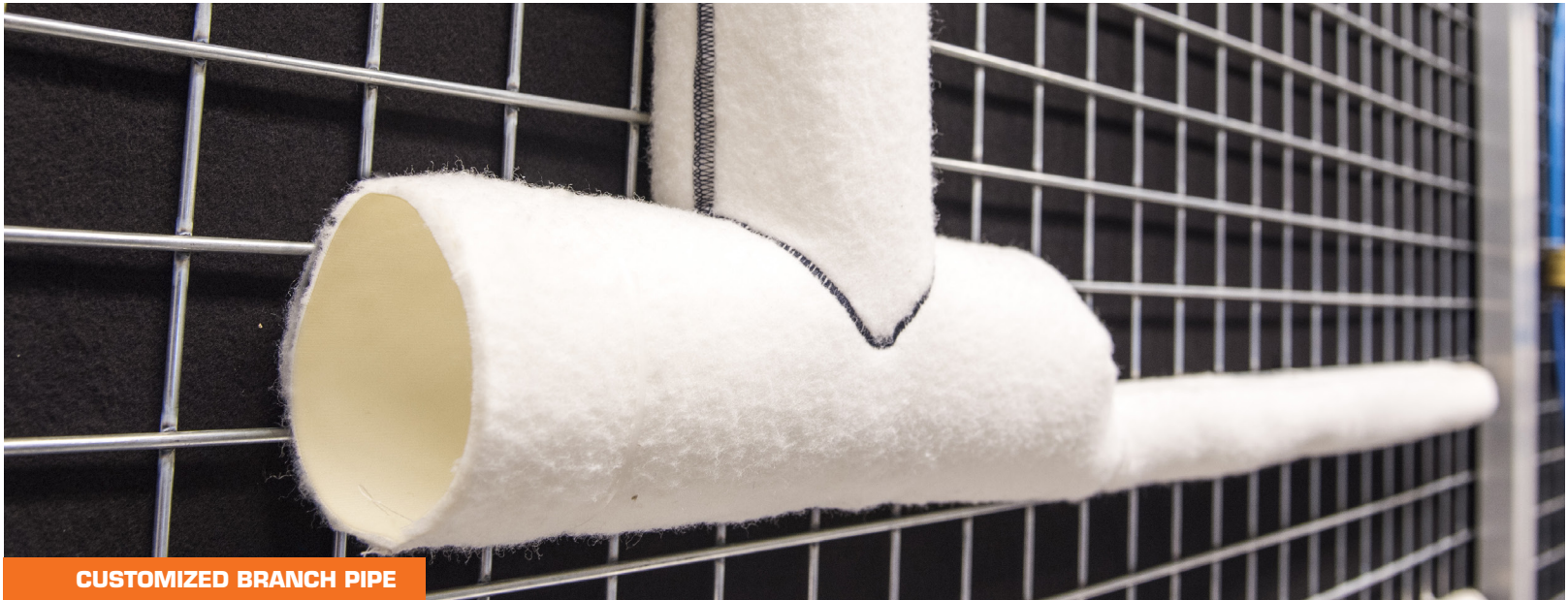
| | |
|-------------|--------------------------------------|
| S1-235-045H | SP Branch Pipe 100/100+100-45 Corner |
| S1-242-045H | SP Branch Pipe 150/100+100-45 Corner |


CORNER 88°
Branch Pipes Corner 88°

| | |
|-------------|--------------------------------------|
| S1-232-088H | SP Branch Pipe 100/75+75-88 Corner |
| S1-234-388H | SP Branch Pipe 100/75+100-88 Corner |
| S1-234-288H | SP Branch Pipe 100/100+75-88 Corner |
| S1-235-088H | SP Branch Pipe 100/100+100-88 Corner |
| S1-242-088H | SP Branch Pipe 150/100+100-88 Corner |


CORNER 90°
Branch Pipes Corner 90°

| | |
|-------------|--------------------------------------|
| S1-235-090H | SP Branch Pipe 100/100+100-90 Corner |
| S1-242-090H | SP Branch Pipe 150/100+100-90 Corner |



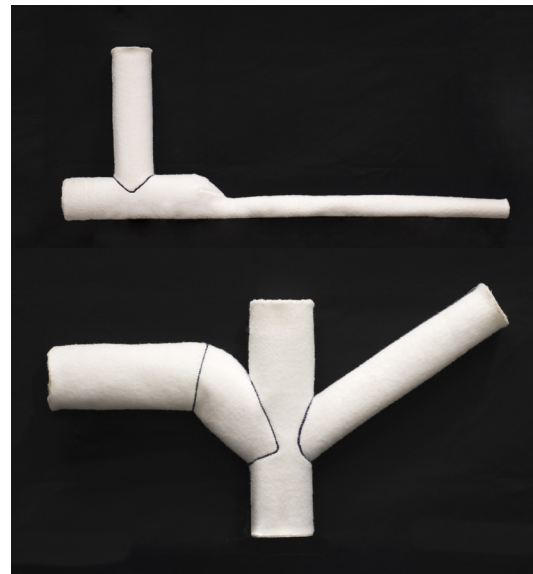
CUSTOMIZED BRANCH PIPE

CUSTOMIZED BRANCH PIPES

With our experience of over 30 years in the industry, we know that pipes and branch pipes can have dimensions and shapes that are anything but standard. Therefore, we offer customized solutions for both branch pipes and tools. Thanks to our efficient production, we can, despite the most extreme installation projects, offer fast deliveries.

UNIQUE BRANCH PIPES

Do you need longer main and lateral pipe sections? Dimension changes on the main pipe? Four lateral pipes on the same branch pipe? We can create almost anything you want. With your input together with the expertise of our technical team we manufacture the branch pipes and tools you need for your unique situation.



Branch Pipes Special

| | |
|-------------|--|
| S1-232-078D | SP Branch Pipe 100/75+75-78 Double |
| S1-900-901 | SP Branch Pipe satellit 100/100+100+75+75-90 |

- For me, the total width of our range is super important. That we can offer tailored connections with short lead times is one of those things that I am very proud of.

Ville Laine - Head of Operation SACPRO OY




RELINING CONNECTION Ø 75 AND Ø 110

RELINING CONNECTION

HOUSELINER SYSTEM

Our Relining Connection is included in the Houseliner System. It is designed to secure the connection between standard waste water pipes and the relined pipe system. The connection is 100% leak-free throughout, to ensure that no moisture can penetrate between the new relining and the old pipe.

The Jet clamp is included in the Relining Connection package. The recommended sealant Sikaflex-521 FC is sold separately.

The installation guide has easy-to-follow instructions on how to install the Relining Connection in a quick, safe and reliable way. The result will be a safe and leak-free connection.

The Relining Connection is a major part of Houseliner System and will of course work perfectly well together with other types of relining, where a secure connection is required.

Relining Connection

| | |
|---------------|--|
| S1-200-110PKT | Relining Connection Ø 110 PP STR incl. Jet Clamp |
| S1-200-075PKT | Relining Connection Ø 75 PP STR incl. Jet Clamp |
| S5-151-002 | Sikaflex-521 FC |



- Back when we were installing contractors, we sometimes had problems with the joint between the new lining and the old pipes leaking. We developed the relining connection and it solved all our problems. It is super easy to install and always gives a good end result.

Tomas Sjögren - Sales Manager



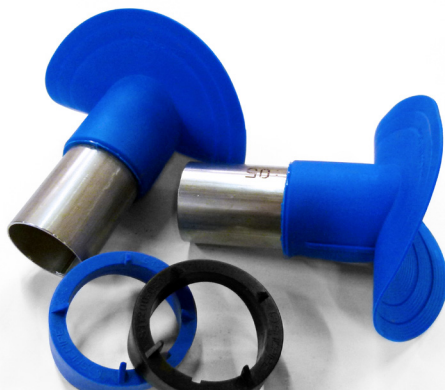


Installing a Branching Connection



BRANCHING CONNECTION

HOUSELINER SYSTEM

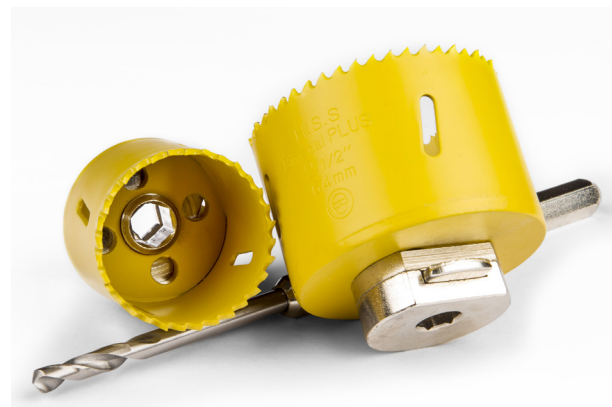


BRANCHING CONNECTION

Use Branching Connection to open up for new connections on the lateral pipes. Branching Connection can be connected to pipes with dimensions DN 75/80 and DN 110. The black ring fits DN 75/80 and the blue fits DN 110.

Branching Connection

| | |
|------------|-------------------------------------|
| S1-200-050 | Branching Connection Ø 50 stainless |
|------------|-------------------------------------|



HOLE SAW PACKAGE

Hole Saw Package for Branching Connection
Complete package for opening holes when mounting Sacparts Branching Connections. Holder, center drill and two HSS Bi-Metal hole saws.

Holesaw Braching Connection

| | |
|------------|--|
| S5-631-080 | Hole Saws Package (Branching Connection) Pro fit |
| S5-631-082 | Holesaw Ø64 Pro fit |
| S5-631-081 | Holesaw Ø44 Pro fit |
| S5-631-083 | Center Drill Pro fit |
| S5-631-002 | Holder Holesaw 2L 63-76 |
| S5-631-076 | Holesaw Ø76 for Branching Connection |

RAPTOR CUTTER



HOUSELINER RAPTOR CUTTER

RAPTOR CUTTER

HOUSELINER DRAIN CLEANING

Houseliner Raptor Cutter is the newest innovation in high-speed drain cleaning.

With its advanced wireless control and patented quickfit reel system this machine is extremely versatile and easy to work with. The reels are available in two versions, 8-10mm and 10-12mm.

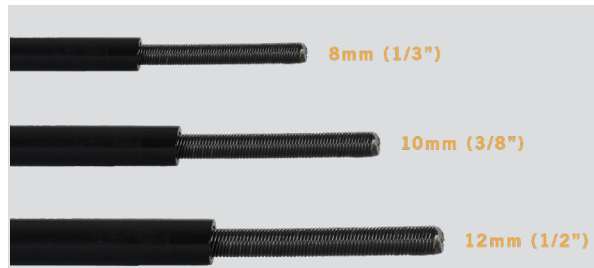
Maximum shaft lengths:

- Ø 8mm - Max length 30 m
- Ø 10mm - Max length 26 m
- Ø 12mm - Max length 23 m

- Advanced wireless control
- Lightweight and portable
- Patented quickfit reel
- Easily fits through doorways
- Operates laying down or standing up
- Adjustable handle for easier storage
- Built in safety features

Raptor Cutter / Shaft

| | |
|------------|--------------------------|
| HL-RP-100 | Houseliner Raptor Cutter |
| HL-RP-110 | Houseliner Microreptile |
| S5-452-008 | Shaft with cover Ø 8mm |
| S5-452-010 | Shaft with cover Ø 10mm |
| S5-452-012 | Shaft with cover Ø 12mm |



SHAFT SIZES

ACCESSORIES

DRAIN CLEANING



Houseliner Reinstatement Tool / Liner Remover

| | |
|-----------|-------------------------------------|
| HL-RP-077 | Houseliner Reinstatement Tool DN75 |
| HL-RP-078 | Houseliner Reinstatement Tool DN100 |
| HL-RP-079 | Houseliner Reinstatement Tool DN150 |
| HL-RP-080 | Houseliner Liner Remover DN75 |
| HL-RP-081 | Houseliner Liner Remover DN100 |
| HL-RP-082 | Houseliner Liner Remover DN150 |



ASSEMBLED GRINDING HUB

Houseliner Grinding Hub

| | |
|-----------|-------------------------------|
| HL-RP-083 | Houseliner Grinding Hub DN75 |
| HL-RP-084 | Houseliner Grinding Hub DN100 |
| HL-RP-085 | Houseliner Grinding Hub DN150 |

Houseliner Grinding Panel

| | |
|-----------|---------------------------------|
| HL-RP-086 | Houseliner Grinding Panel DN75 |
| HL-RP-087 | Houseliner Grinding Panel DN100 |
| HL-RP-088 | Houseliner Grinding Panel DN150 |

Houseliner Support Panel

| | |
|-----------|--------------------------------|
| HL-RP-089 | Houseliner Support Panel DN75 |
| HL-RP-090 | Houseliner Support Panel DN100 |
| HL-RP-091 | Houseliner Support Panel DN150 |

SCALING CHAINS

HOUSELINER CHAINS



Houseliner Viper Chain

| | |
|-----------|-----------------------------------|
| HL-RP-001 | Houseliner Viper Chain DN50 8mm |
| HL-RP-002 | Houseliner Viper Chain DN75 8mm |
| HL-RP-003 | Houseliner Viper Chain DN100 8mm |
| HL-RP-023 | Houseliner Viper Chain DN75 10mm |
| HL-RP-024 | Houseliner Viper Chain DN100 10mm |
| HL-RP-026 | Houseliner Viper Chain DN150 10mm |
| HL-RP-050 | Houseliner Viper Chain DN75 12mm |
| HL-RP-052 | Houseliner Viper Chain DN100 12mm |
| HL-RP-054 | Houseliner Viper Chain DN150 12mm |

Houseliner Pike Chain

| | |
|-----------|------------------------------------|
| HL-RP-137 | Houseliner Pike DN50 (2 links) 8mm |
| HL-RP-138 | Houseliner Pike DN75 8mm |
| HL-RP-139 | Houseliner Pike DN100 8mm |
| HL-RP-140 | Houseliner Pike DN75 10mm |
| HL-RP-141 | Houseliner Pike DN100 10mm |
| HL-RP-142 | Houseliner Pike DN150 10mm |
| HL-RP-143 | Houseliner Pike DN75 12mm |
| HL-RP-144 | Houseliner Pike DN100 12mm |
| HL-RP-145 | Houseliner Pike DN150 12mm |



Houseliner Trident Chain

| | |
|-----------|-------------------------------------|
| HL-RP-038 | Houseliner Trident Chain DN100 10mm |
| HL-RP-040 | Houseliner Trident Chain DN150 10mm |
| HL-RP-072 | Houseliner Trident Chain DN100 12mm |
| HL-RP-074 | Houseliner Trident Chain DN150 12mm |
| HL-RP-076 | Houseliner Trident Chain DN225 12mm |

Houseliner Cyclone Chain

| | |
|-----------|-------------------------------|
| HL-RP-130 | Houseliner Cyclone DN75 8mm |
| HL-RP-131 | Houseliner Cyclone DN100 8mm |
| HL-RP-132 | Houseliner Cyclone DN75 10mm |
| HL-RP-133 | Houseliner Cyclone DN100 10mm |
| HL-RP-134 | Houseliner Cyclone DN150 10mm |
| HL-RP-135 | Houseliner Cyclone DN100 12mm |
| HL-RP-136 | Houseliner Cyclone DN150 12mm |

Houseliner PVC Chain

| | |
|-----------|---------------------------------|
| HL-RP-008 | Houseliner PVC Chain DN50 8mm |
| HL-RP-009 | Houseliner PVC Chain DN75 8mm |
| HL-RP-010 | Houseliner PVC Chain DN100 8mm |
| HL-RP-030 | Houseliner PVC Chain DN75 10mm |
| HL-RP-031 | Houseliner PVC Chain DN100 10mm |
| HL-RP-033 | Houseliner PVC Chain DN150 10mm |
| HL-RP-034 | Houseliner PVC Chain DN200 10mm |
| HL-RP-062 | Houseliner PVC Chain DN100 12mm |
| HL-RP-064 | Houseliner PVC Chain DN150 12mm |
| HL-RP-065 | Houseliner PVC Chain DN200 12mm |



HOUSELINER®

INVERSION DRUM

EXTRUDER EXO 700

The Houseliner EXO 700 Extruder is the first size in a new range of Extruders.

Lightweight drum and frame where the latter are detachable in two ways, the complete frame, or just the wheels, all by just pulling a tab. With the frame off, the Extruder has its own "feet" to stand on. The frame has integrated holders for cordless drill, storz key, and hose clamps. Probably the industry's largest sight glass, that opens with only one lever. Internal lighting as an option. Suitable for ambient, steam, hot water, or UV curing.



INVERSION DRUM

EXTRUDER EXO 350

The Houseliner EXO 350 Extruder is the smallest Extruder in the EXO-family.

The EXO 350 Extruder offers convenience with its compact and lightweight design. Its adjustable angle and manageable dimensions make it versatile for a range of installations, ensuring efficiency and ease of use.



| Model | Weight | Off wheel-stand | Stacked Liner Length* | Max Liner Length* | Width | Length | Height | Off wheel-stand |
|-------------------------|------------------|-----------------|-----------------------|-------------------|-------------------|-------------------|--------------------|-------------------|
| Extruder EXO 700 | 55 kg/ 121 lb | 40 kg/ 88 lb | 45 m/ 147 ft | 70 m/ 229 ft | 63 cm/ 24,8 in | 95 cm/ 37,4 in | 107 cm/ 42,1 in | 82 cm/ 32,3 in |
| Extruder EXO 350 | 12 kg/ 26 öb | - | - | 11 m/ 36 ft | 44 cm/ 17 in | 55 cm/ 22 in | 50 cm/ 20 in | - |

*1 Recommended maximum length with Houseliner DN100-150 FL 3mm wet-out liner.

EXO Inversion Drums

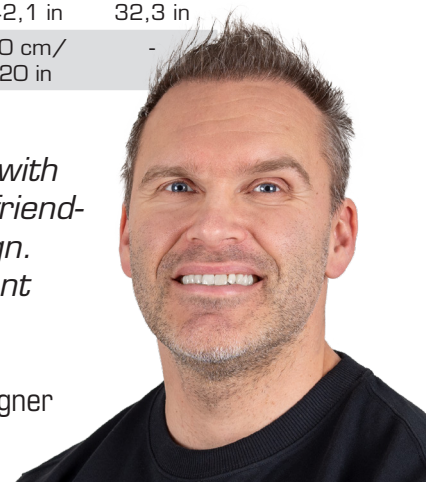
S4-601-460 Extruder EXO 350 Alu

S4-601-850 Extruder EXO 700 Alu

Produced according to SS EN ISO 13445-8

-We design our products with a focus on function, user-friendliness and appealing design. Our extruders are a brilliant example of that.

Fredrik Åhslund - Product Designer



SACPRO

www.sacpro.se | www.sacpro.fi

SACPRO AB, Källviksvägen 10, SE-791 52 Falun, Sweden | +46 23 79 06 50 | info@sacpro.se

INVERSION DRUMS

HOUSELINER EXTRUDERS

Houseliner Extruders are inversion drums developed for liner installation with air pressure. They are designed to go through regular doorways. You can bring them all the way into apartment bathrooms.

Houseliner Extruders are available in five different sizes to meet all your needs. The Inversion drum is made of aluminum for maximum strength combined with low weight. The larger drums have large sight glass that provide a good overview into the pressure vessel during work.

Houseliner Extruders are the perfect tool for liner installation inside building with a fully controlled and safe inversion process. Suitable for ambient, steam, hot water, or UV curing.

EXTRUDER 700 SLIM - LS



EXTRUDER 900



EXTRUDER 700



EXTRUDER 700 SLIM



EXTRUDER 500

| Model | Weight | Off wheel-stand | Stacked Liner Length* | Max Liner Length* | Width | Length | Height | Off wheel-stand |
|-------------------------------|------------------|-----------------|-----------------------|-------------------|-------------------|--------------------|--------------------|-------------------|
| Extruder 900 | 80 kg/ 176 lb | - | 70 m/ 229 ft | 100 m/ 328 ft | 82 cm/ 32,3 in | 120 cm/ 47,3 in | 128 cm/ 50,4 in | - |
| Extruder 700 Slim | 63 kg/ 139 lb | 53kg/ 117 lb | 45 m/ 147 ft | 70 m/ 229 ft | 59 cm/ 23,2 in | 98 cm/ 38,6 in | 114 cm/ 44,9 in | 96 cm/ 37,8 in |
| Extruder 700 Slim - LS | 55 kg/ 121 lb | 40 kg/ 88 lb | - | 70 m/ 229 ft | 63 cm/ 24,8 in | 95 cm/ 37,4 in | 107 cm/ 42,1 in | - |
| Extruder 700 | 52 kg/ 114 lb | - | 45 m/ 147 ft | 70 m/ 229 ft | 72 cm/ 28,4 in | 91 cm/ 35,8 in | 118 cm/ 46,5 in | - |
| Extruder 500 | 39 kg/ 86 lb | - | 22 m/ 72 ft | 35 m/ 114 ft | 63 cm/ 24,8 in | 86 cm/ 33,6 in | 112 cm/ 44,1 in | - |

*1 Recommended maximum length with Houseliner DN100-150 FL 3mm wet-out liner.

Inversion Drums

| | |
|------------|--------------------------|
| S4-601-200 | Extruder ST 200 Alu |
| S4-601-350 | Extruder ST 350 Alu |
| S4-601-500 | Extruder ST 500 Alu |
| S4-601-700 | Extruder ST 700 Alu |
| S4-601-750 | Extruder ST 700 Slim Alu |
| S4-601-900 | Extruder ST 900 Alu |

Produced according to SS EN ISO 13445-8



ALL HOUSELINER EXTRUDERS ARE AVAILABLE WITH STORZ OR CAMLOCK COUPLING

ACCESSORIES

INVERSION DRUMS



STRAIGHT

45°

90°

STEAM

HOSE PACKAGE

HOSE

CAMLOCK STRAIGHT

Hose Packages

S5-418-100 Hose Package, Extruder Hot Water Circulation

Storz accessories

| | |
|--------------|--|
| S4-603-004 | Rubber gasket Storz 6" |
| S4-603-013 | Storz 6" Cover Alu. |
| S4-603-003 | Storz A Cover 4" |
| S4-603-010 | Storz Transition 6"-8" 150-205 |
| S4-603-008 | Storz Transition Reduc 4" x 6" 133 - 160, Svivel |
| S4-603-021 | Storz lever 100-150 alu (6) |
| S4-603-030 | Inversion (Straight) Storz 4" to liner Ø 75, Hose |
| S4-603-031 | Inversion (Straight) Storz 4" to liner Ø 150, Hose |
| S4-603-040 | Inversion (Straight) Storz 4" to liner Ø 100, Hose |
| S4-603-018 | Inversion (Straight) Storz 6" to liner Ø 50 |
| S4-603-047 | Inversion (Straight) Storz 6" to liner Ø 75 |
| S4-603-048 | Inversion (Straight) Storz 6" to liner Ø 100 |
| S4-603-048,5 | Inversion (Angle 45°) Storz 4" to liner Ø 75 |
| S4-603-049 | Inversion (Angle 45°) Storz 4" to liner Ø 100 |
| S4-603-049,5 | Inversion (Angle 90°) Storz 4" to liner Ø 75 |

| | |
|------------|---|
| S4-603-050 | Inversion (Angle 90°) Storz 4" to liner Ø 100 |
| S4-603-051 | Inversion (Straight) Storz 6" to liner Ø 150 |
| S4-603-052 | Inversion (Angle 45°) Storz 6" to liner Ø 150 |
| S4-603-053 | Inversion (Angle 90°) Storz 6" to liner Ø 150 |

Camlock accessories

| | |
|------------|---------------------------------|
| S4-603-160 | Inversion (Straight) 6" Ø50/2" |
| S4-603-161 | Inversion (Straight) 6" Ø75/3" |
| S4-603-162 | Inversion (Straight) 6" Ø100/4" |
| S4-603-163 | Inversion (Straight) 6" Ø150/4" |
| S4-603-164 | Inversion (Straight) 8" Ø200/8 |
| S4-603-166 | Camlock Transition 6"- 8" |
| S4-603-167 | Camlock female 6" |
| S4-603-168 | Camlock female 8" |
| S4-603-169 | Camlock male 6" lid |



END PLUG

End plugs

| | |
|------------|--|
| S4-603-072 | End plug Ø 40 with grommet incl. hose and valve |
| S4-603-070 | End plug Ø 60 with grommet incl. hose and valve |
| S4-603-101 | End plug Ø 100 with grommet incl. hose and valve |

Liner lubricating spray system

S4-601-101 Liner lubricating system



HOLDERS FOR LINER

Holders for liner

S4-604-000 Holders for liner, kit 3/4/6"

Clamping pliers

S4-603-028 Clamping pliers 280

HEAT CURING

STEAM GENERATORS



STEAM UNIT MEDIUM

By adding heat during the curing process, the installation will be faster and performed in a controlled manor. With determined temperature, the risk of ending up with an installation that isn't completely cured is eliminated.

STEAM UNIT MEDIUM

Steam Unit Medium ha a heating power of 6 kW and requires a 3-phase, 400v, 16A power supply. Quick start-up, free from diesel spills and fumes. Continuous water connection to the steam unit allows continuous operation.

Low centre of gravity, large wheels and ergonomic design makes the transportation of the steam generator convenient all the way to the work sight. Easy to understand and secure operation with all controls gadered on a control panel.



STEAM BOX SMALL 1400

STEAM BOX SMALL 1400

Electrical Steam Box Small 1400 for steam curing when installing branch pipes. Heating power of 1,4 kW and requires 1 phase 240V power supply.

Steam Genarators

| | |
|------------|----------------------|
| BW-601-010 | Steam Box Small 1400 |
| S4-801-001 | Steam Unit Medium |

TEMPERATURE SENSOR

Equipment to monitor the temperature during the curing process of the branch pipe or liner installation. The wire for the temperature sensor is sold separately.

Temperature Sensor

| | |
|------------|---|
| EL-100-000 | Temperature Sensor Package |
| EL-100-006 | Wire for the Temperature Sensor, 25m, Spool |

Hose kit steam for packer holder tools

| | |
|------------|------------------------------|
| S5-201-101 | Hose kit. steam fixture Ø 60 |
| S5-201-102 | Hose kit. steam fixture Ø 80 |



PRESSURE GUARD

PRESSURE GUARD

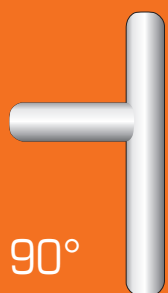
Avoid liner collapse during the curing process.

The Pressure Guard is a monitoring device that will send you an alert through a text message, if the pressure in the installation becomes too low, or if there is a power loss. The Pressure Guard eases the installers workload as he is not required to be on site during the entire curing process and can proceed with other work duties.

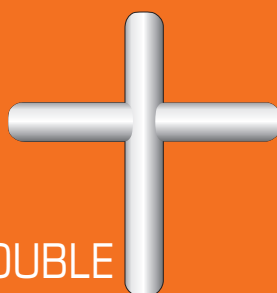
Several cell phone numbers can be programmed with the included software. This is an easy to use, very cost efficient and reassuring device that will eliminate unpleasant surprises when returning to a cured installation.

Pressure Guard

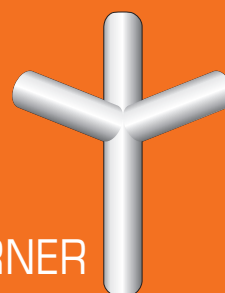
| | |
|------------|----------------|
| S4-730-020 | Pressure Guard |
|------------|----------------|



90°



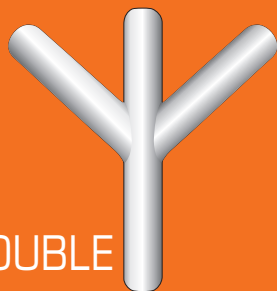
90° DOUBLE



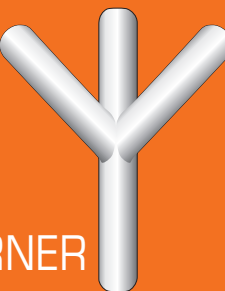
90° CORNER



45°



45° DOUBLE



45° CORNER

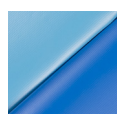
BRANCH PIPE TOOLS

Sacpro provides branch pipe tools in many different standard designs. We also manufacture customized versions.

Every branch pipe tool includes a packer cover and packer holder suited for the specific branch pipe you are about to install. Sacpro has many different versions in stock, to fit most standard pipes on the market.

BLADDER MATERIAL

Sacpro have three different bladder materials:



STANDARD (CUSTOM PRODUCTION)

A reliable material that must be lubricated with grease. Thin, flexible and stretchable. Durable for multiple installations. This material is also repairable out in the field.



DUAL LAYER SILICONE SURFACE

A reliable material with a silicone surface that does not require lubrication with grease. Thin, flexible and stretchable. Durable for multiple installations.



SILICONE

A reliable silicone material that does not require lubrication with grease. Flexible and stretchable material. Durable for multiple installations.

- RIGID OR FLEXIBLE TOOLS
- CORD FOR CONTROLLED INSTALLATIONS
- DOUBLE RODS INSIDE FOR EASIER POSITION ADJUSTMENTS
- WITH OR WITHOUT STEAM
- REPLACEABLE BLADDERS

RIGID OR FLEXIBLE TOOLS

Our standard tools are rigid tools that are easy to use but do not go through a 90° bend.

Flextool is a tool that goes through 90° bends. It can easily move back and forth through the bends. This makes it possible to install branch pipes even behind several sharp bends. The Flextool is an extremely flexible, yet rotatable tool that guides the branch pipes into the right position. The tool is guided into place with flexible rods (Flexrod) and is compliant with Ridgid® push-rods. The bladder is replaceable.

FLEXTOOL BL

Our flexible packer holder tool that have the same features as the regular Flextool but is suited for installations from the branch line.

CUSTOMIZED TOOLS

In addition to standard dimensions for standard branch pipes, Sacpro manufactures custom branch pipe tools, to meet our customer's needs.


COMPLETE BRANCH PIPE FLEXTOL BL FOR 45°

| Bladders 45° Double | | | |
|---------------------|--------------|---------------|-----------------|
| Dimension | Standard | Silicone Dome | Silicone String |
| 100/75+75-45D | S3-350-145D | MTO* | S8-350-145D |
| 100/100+63-45D | S3-351-063D | MTO* | MTO* |
| 100/100+75-45D | S3-350-045D | MTO* | MTO* |
| 100/100+100-45D | S3-351-045D | MTO* | S8-351-045D |
| 125/75+75-45D | S3-3511-045D | MTO* | MTO* |
| 150/75+75-45D | S3-3531-045D | MTO* | MTO* |
| 150/100+100-45D | S3-353-045D | MTO* | S8-353-045D |

| Bladders 78° Double | | | |
|---------------------|-------------|---------------|-----------------|
| Dimension | Standard | Silicone Dome | Silicone String |
| 100/75+75-78D | S3-350-078D | MTO* | MTO* |

| Bladders 90° Double | | | |
|---------------------|--------------|---------------|-----------------|
| Dimension | Standard | Silicone Dome | Silicone String |
| 100/50+50-90D | S3-351-190D | MTO* | MTO* |
| 100/100+75-90D | S3-354-090D | MTO* | S8-350-190D |
| 100/100+63-90D | S3-354-063D | MTO* | MTO* |
| 100/100+75-90D | S3-354-090D | MTO* | MTO* |
| 100/100+100-90D | S3-351-090D | MTO* | S8-351-090D |
| 125/75+75-90D | S3-3511-090D | MTO* | MTO* |
| 150/100+100-90D | S3-353-090D | MTO* | S8-353-090D |

| Bladders 45° Corner | | | |
|---------------------|-------------|---------------|-----------------|
| Dimension | Standard | Silicone Dome | Silicone String |
| 100/75+75-45C | S3-350-145H | MTO* | S8-350-145H |
| 100/100+75-45C | S3-351-145H | MTO* | MTO* |
| 100/100+100-45C | S3-351-045H | MTO* | S8-351-045H |
| 150/100+100-45C | S3-353-045H | MTO* | MTO* |

| Bladders 68° Corner | | | |
|---------------------|-------------|---------------|-----------------|
| Dimension | Standard | Silicone Dome | Silicone String |
| 100/100+100-68C | S3-351-068H | MTO* | MTO* |

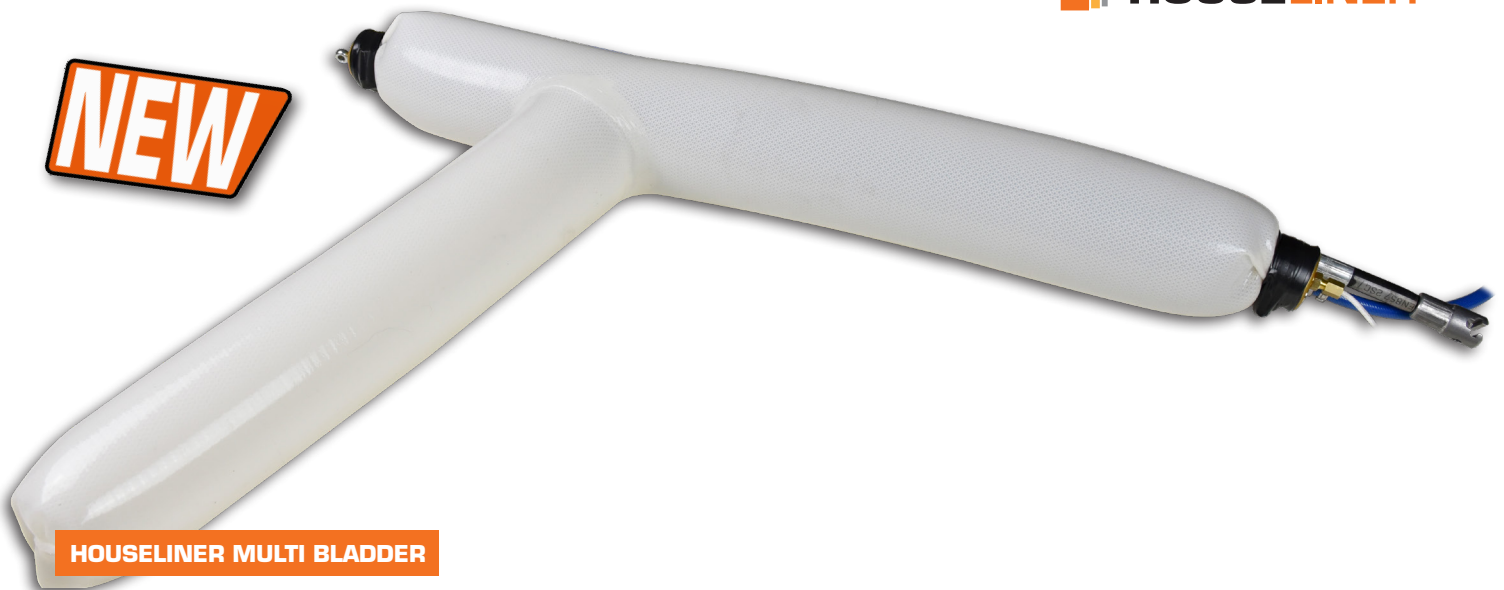
| Bladders 90° Corner | | | |
|---------------------|-------------|---------------|-----------------|
| Dimension | Standard | Silicone Dome | Silicone String |
| 100/75+75-90C | MTO* | MTO* | S8-350-190H |
| 100/100+75-90C | S3-351-190H | MTO* | S8-351-190H |
| 100/100+100-90C | S3-351-090H | MTO* | S8-351-090H |
| 150/100+100-90C | S3-353-090H | MTO* | MTO* |

| BL Bladders | |
|-------------|------------|
| Dimension | Standard |
| 100/100-45 | DL-100-001 |
| 100/100-90 | DL-100-002 |
| 150/150-45 | S8-363-045 |
| 150/150-90 | S8-363-090 |

| Bladders Dual Layer Silicon Surface | |
|-------------------------------------|---------------|
| Dimension | Standard |
| 75/75-45 | DL-342-045 |
| 100/50-45 | DL-348-045 |
| 100/50-45PP | DL-348-045PP |
| 100/75-45 | DL-350-045 |
| 100/100-45 | DL-351-045 |
| 125/75-45 | DL-3511-045 |
| 125/100-45 | DL-3512-045 |
| 125/125-45 | DL-3513-045 |
| 75/75-90 | DL-342-090 |
| 100/50-90PP | DL-349-6050PP |
| 100/75-90 | DL-350-090 |
| 100/100-90 | DL-351-067 |
| 125/75-90 | DL-3511-090 |
| 125/100-90 | DL-3512-090 |
| 125/125-90 | DL-3513-090 |
| 100/75+75-45D | DL-350-145D |
| 100/100+75-45D | DL-360-045D |
| 100/100+100-45D | DL-351-045D |
| 100/100+75-90D | DL-354-090D |
| 100/100+100-90D | DL-351-090D |

* Made To Order

NEW



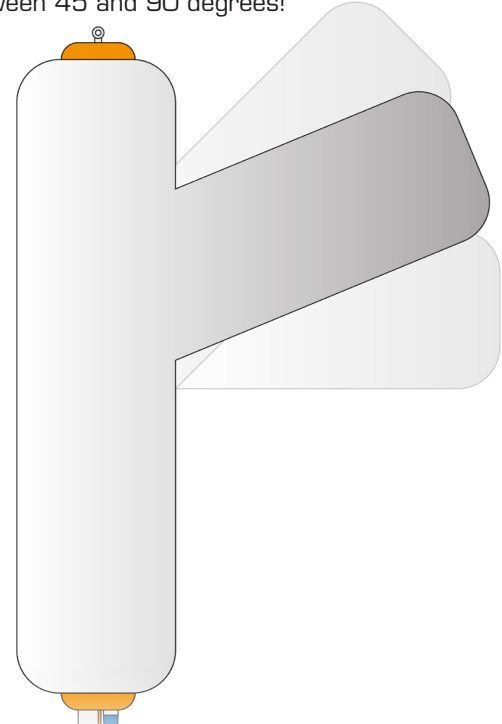
HOUSELINER MULTI BLADDER

Introducing the **HOUSELINER MULTI BLADDER** – your all-in-one solution for junction installations. Simplify installations and save money by replacing multiple bladders with this versatile tool. No more switching between different bladders, same bladder for angles between 45 and 90 degrees!



All installations are made with the same tool.

New Silicon, produced with less internal friction.



Multi Bladder (Silicon) - Standard

| | |
|-------------------|--|
| HL-SF-100-100 | Houseliner Multi Bladder 100 - 100 |
| HL-SF-100-050 | Houseliner Multi Bladder 100 - 050 |
| HL-SF-100-075 | Houseliner Multi Bladder 100 - 075 |
| HL-SF-125-100 | Houseliner Multi Bladder 125 - 100 |
| HL-SF-125-125 | Houseliner Multi Bladder 125 - 125 |
| HL-SF-125-075 | Houseliner Multi Bladder 125 - 075 |
| HL-SF-150-100 | Houseliner Multi Bladder 150 - 100 |
| HL-SF-150-125 | Houseliner Multi Bladder 150 - 125 |
| HL-SF-150-150 | Houseliner Multi Bladder 150 - 150 |
| HL-SF-150-075 | Houseliner Multi Bladder 150 - 075 |
| HL-SF-200-125 | Houseliner Multi Bladder 200 - 125 |
| HL-SF-200-200 | Houseliner Multi Bladder 200 - 200 |
| HL-SF-200-225-100 | Houseliner Multi Bladder 200 - 225 - 100 |
| HL-SF-200-225-150 | Houseliner Multi Bladder 200 - 225 - 150 |

Multi Bladder (Silicon) - Dubbel

| | |
|---------------------|---|
| HL-SF-100-045D | Houseliner Multi Bladder 100 - 045 Dubbel |
| HL-SF-100-075D-CENT | Houseliner Multi Bladder 100 - 075 Dubbel C |
| HL-SF-100-075D | Houseliner Multi Bladder 100 - 075 Dubbel |
| HL-SF-150-110 | Houseliner Multi Bladder 150 - 110 Dubbel |
| HL-SF-075-076 | Houseliner Multi Bladder 075 - 076 Dubbel |

Multi Bladder (Silicon) - Corner

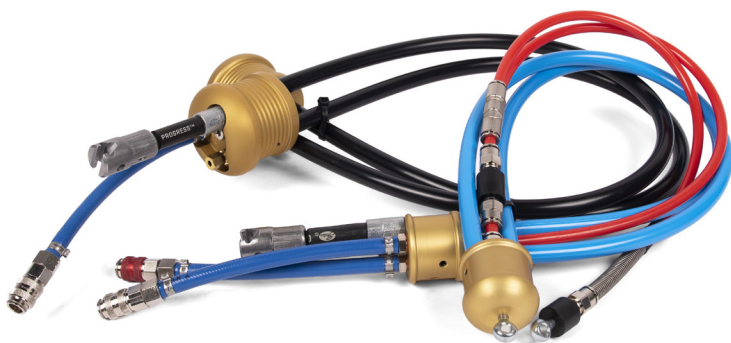
| | |
|----------------|---|
| HL-SF-100-090H | Houseliner Multi Bladder 100 - 090 Corner |
| HL-SF-100-075H | Houseliner Multi Bladder 100 - 075 Corner |
| HL-SF-150-120 | Houseliner Multi Bladder 150 - 120 Corner |
| HL-SF-075-077 | Houseliner Multi Bladder 075 - 077 Corner |



FLEXTOOL

Flextools

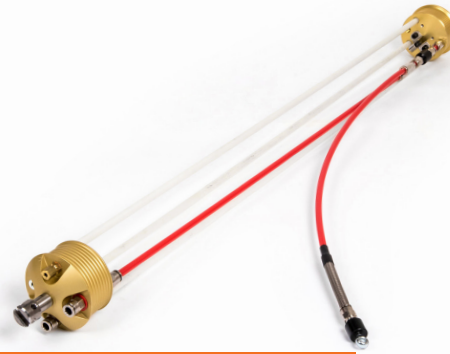
| | |
|------------|--|
| S4-700-040 | Bladder holder tool Flextool 40 Ø100-125 |
| S4-700-041 | Bladder holder tool Flextool 40 Ø100-125 Steam |
| S4-700-070 | Bladder holder tool Flextool 70 Ø150 |
| S4-700-071 | Bladder holder tool Flextool 70 Ø150 Steam |
| S4-700-072 | Bladder holder tool Flextool BL 70 Ø150 |
| S4-700-042 | Bladder holder tool Flextool BL 40 Ø100-125 |



BLADDER HOLDER FLEXTOOLS

Bladder holders Ø200-225

| | |
|------------|-----------------------------------|
| S4-700-130 | Bladder holder 130 Ø200-225 |
| S4-700-131 | Bladder holder 130 Ø200-225 Steam |



BLADDER HOLDER STEAM

Bladder holders Ø150

| | |
|------------|------------------------------|
| S4-700-080 | Bladder holder 80 Ø150 |
| S4-700-081 | Bladder holder 80 Ø150 Steam |

Bladder holders Ø100-125

| | |
|------------|----------------------------------|
| S4-700-060 | Bladder holder 60 Ø100-125 |
| S4-700-061 | Bladder holder 60 Ø100-125 Steam |

Bladder holders Ø70

| | |
|------------|-----------------------------|
| S4-700-034 | Bladder holder 40 Ø70 |
| S4-700-035 | Bladder holder 40 Ø70 Steam |



FLEXROD

PUSH- AND FLEXRODS

Flexrod are flexible rods that goes through 90° bends and are designed to work in combination with Flextool. The flexible rods are compatible with Ridgid® push-rods.

Flexrods

| | |
|------------|-------------|
| S4-800-001 | Flexrod 1 m |
| S4-800-002 | Flexrod 2 m |
| S4-800-003 | Flexrod 3 m |

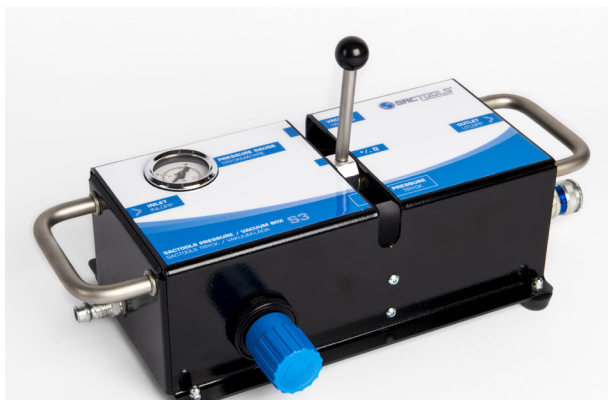


Ridgid push-rods are to be connected to the bracket located on the fixture for installation.

Ridgid push-rods

| | |
|------------|------------------------|
| BW-604-090 | Ridgid push-rod 900 mm |
| BW-604-150 | Ridgid push-rod 1500mm |

ACCESSORIES BRANCH PIPE TOOLS



PRESSURE/VACUUM BOX S3

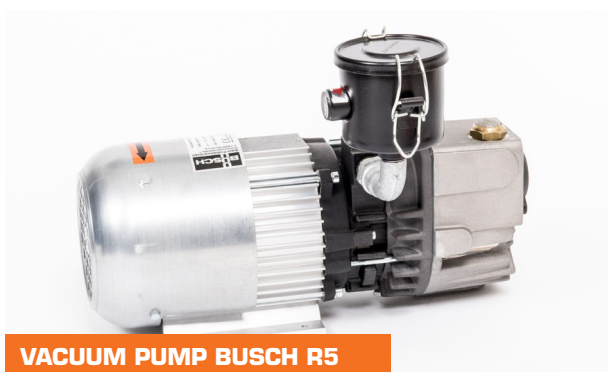
PRESSURE/VACUUM BOX S3

The Pressure/Vacuum Box is an important tool to make branch pipe installations easier.

- Pressure and vacuum
- Single lever operation
- Built-in precision regulator
- Makes installations easier
- Weight 3,2 kg

Sactools Pressure/Vacuum Box S3

| | |
|------------|------------------------|
| S4-630-020 | Pressure/Vacuum Box S3 |
|------------|------------------------|



VACUUM PUMP BUSCH R5

Vacuum pump

| | |
|------------|--------------------------------|
| BU-100-002 | Vacuum pump Busch R5 2008l/min |
| BU-200-001 | Vacuum pump Busch (portable) |

Accessories pressure/vacuum

| | |
|------------|---------------------------------|
| S4-660-001 | Precision pressure regulator |
| S4-631-001 | Suction cup Pi-vac B75P.5E G40M |
| S4-630-001 | Vacuum ejector mini kit |



BAND-IT HOSE CLAMP

BAND-IT HOSE CLAMP

A stylish, durable and above all an incredibly smooth hose clamp. Perfect when fixating the bladder on the bladder holder. The BAND-IT hose clamp is to be tightened with a BAND-IT Tool. The hose clamp is available in multiple sizes.

Band IT Hose Clamp

| | |
|------------|------------------------|
| S5-222-063 | Band IT Jr. 12,7 x 63 |
| S5-222-088 | Band IT Jr. 12,7 x 88 |
| S5-222-101 | Band IT Jr. 19,1 x 101 |
| S5-222-133 | Band IT Jr. 19,1 x 133 |
| S5-222-152 | Band IT Jr. 19,1 x 152 |

Band IT Tool

| | |
|------------|---------------------------------------|
| S5-650-001 | Band IT Tool incl. Heavy Duty Adaptor |
|------------|---------------------------------------|

LUBRICATION

The Hydro Gliss Gel is used to lubricate the bladder in order to prevent the resin from sticking to the bladder cover.



LUBRICATION GEL

| | |
|------------|-------------------------|
| S6-200-100 | Hydro Gliss Gel (500ml) |
|------------|-------------------------|

SILICONE SPRAY

Silicone spray is used to lubricate the inside of the bladder cover.

Silicon spray

| | |
|------------|---------------------------|
| S5-156-030 | Revolta S.I.L Spray 400ml |
|------------|---------------------------|

IMPREGNATION UNITS

Devices to evenly distribute the resin when impregnating a liner. The impregnation units are perfect tools for achieving the best results regarding thickness and distribution of resin within the liner, which improves the final result considerably.

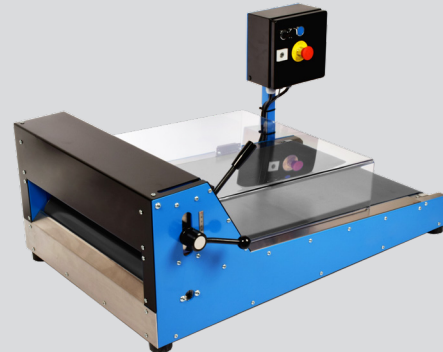
COMPACT ELECTRIC ROLLER 430

- Weight 16,5 kg/ 36 lb
- Length 190 mm, width 590 mm, height 350 mm
- Roller width 430 mm/ 16,9 in
- Adjustable height with thickness indicator in millimeter
- Adjustable speed
- Forward and reverse operation
- Pinch protection
- Operates at 100 - 240 V



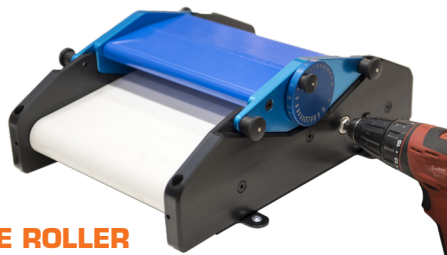
MANUAL ROLLER

- Weight 26 kg/ 57 lb
- Length 250 mm, width 610 mm, height 450 mm
- Roller width 300/400 mm/ 11,8/15,7 in
- Measuring scale on the side
- Locking lever to adjust the distance between the rollers



AUTOMATIC ELECTRIC ROLLER L

- Weight 55 kg/ 121 lb
- Length 950 mm, width 550 mm, height 450 mm
- Roller width 480 mm/ 18,9 in
- Measuring scale on the side
- Locking lever to adjust the distance between the rollers
- Operates at 220 - 240 V

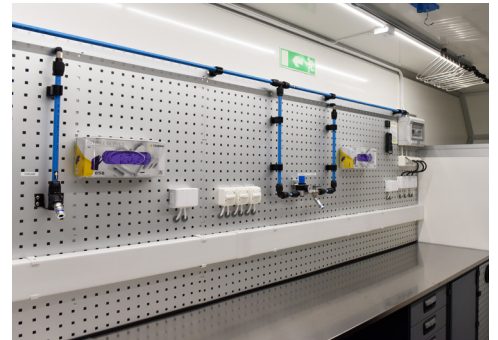


PORTABLE ROLLER

- Weight 7,5 kg/ 16 lb
- Length 400 mm, width 350 mm, height 150 mm
- Roller width is 235mm/ 9,25 in
- Measuring scale on the side
- Powered by cordless drill (not included)

Impregnation Units

| | |
|-------------|--------------------------------|
| S4-610-419 | HL Compact Electric Roller 430 |
| S4-610-150 | Manual Roller |
| S4-610-160E | Automatic Electric Roller L |
| PI-001-001 | Portable Roller |



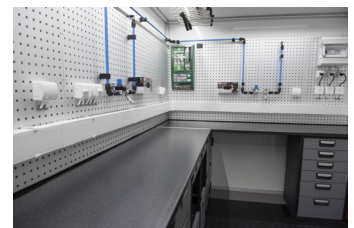
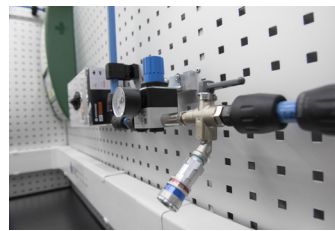
MOBILE WORKSTATION

MOBILE WORKSTATIONS

CUSTOM BUILT

Our mobile workstations is a complete workshop for relining. A safe, pleasant and effective work environment that can be placed next to your installation site. The standard workstation comes well equipped with heating, benches, easy sliding drawers, ventilation cabinets, manual impregnation unit, service compressor, vacuum etc.

They are custom built and many accessories can be added as per your requirement. For example electric impregnation unit, air conditioning, diesel or petrol air compressor, stereo etc.



-The quality of our mobil workstations are on another level. Perfectly tailored to suit our customers needs.

Roger Henningson - Master vehicle builder



SACPRO

www.sacpro.se | www.sacpro.fi

SACPRO AB, Källviksvägen 10, SE-791 52 Falun, Sweden | +46 23 79 06 50 | info@sacpro.se

VEHICLE & TRAILER TYPES

All our vehicles and trailers are custom built to suit the customers needs. We offer tailored workbenches, ventilated mixing cabinets, compressors, vacuum, impregnation units, air conditioning, heating, custom lighting, stereo and much more. The vehicles and trailers below are examples of the types we offer.



VAN WORKSTATION

Size of workspace:

L 4256 x W 1784 x H 2025

This example is built on a Ford chassi.

We build on any van base chassi
customer requests.



TRUCK WORKSTATION

Size of workspace:

L 4150 x W 2160 x H 2100

This example is built on a Renault chassi.

We build on any van base chassi
customer requests.



TRAILER WORKSTATION

Size of workspace:

L 6500 x W 2350 x H 2100

Can be built from 4 to 12 meters length.



CONTAINER WORKSTATION

Size of workspace:

Standard 20 foot, L 6000 x W 2400 x H 2300



CONSUMABLES



LDPE HOSE

Low Density Polyethylene. The LDPE hose is used for an extension between the Extruder and the pipe to be relined. It can also be used at the pipe end, if the relining extends past the pipe.

LDPE Hose

| | |
|------------|---------------------------------|
| S3-303-120 | LPDE Hose 120-010 Ø 75, 100 m |
| S3-303-175 | LPDE Hose 175-020 Ø 110, 100 m |
| S3-303-205 | LPDE Hose 205-0,20 Ø 135, 100 m |
| S3-303-250 | LPDE Hose 250-020 Ø 160, 100 m |
| S3-303-354 | LPDE Hose 354-0,20 Ø 225, 100 m |



PULL STRAP

The pull strap is used to control the speed of the installation and will give the installer the possibility to rewind the liner. One end of the pull strap is attached at the centre axle of the Extruder (Inversion drum), the other end is attached to the furthest end of the liner to be installed. The pull strap must be longer than the liner.

Pull Strap

| | |
|------------|--------------------------------|
| S5-135-027 | Pull Strap 15 mm roll 50 meter |
| S5-135-025 | Pull Strap 25 mm roll 50 meter |

CLEANING PADS

The pads are extremely effective for grease removal on all equipment and for the user.

Cleaning Pads

| | |
|------------|---------------------------------|
| S5-156-020 | Cleaning Pads CL 510 (150 pcs.) |
|------------|---------------------------------|



CALIBRATION HOSE

The calibration hose is primarily used when installing an open-end liner. When curing with high temperatures use a high-temperature calibration hose.

As an extra precaution, we recommend that you bring a calibration hose of every dimension for each installation, in case of a leak or puncture in the liner

Calibration Hose

| | |
|------------|---|
| BW-110-075 | CH DN 70, std. temp up to 40°C, (100m) |
| BW-110-100 | CH DN 100, std. temp up to 40°C, (100m) |
| BW-110-125 | CH DN 125, std. temp up to 40°C, (100m) |
| BW-110-150 | CH DN 150, std. temp up to 40°C, (100m) |
| BW-110-200 | CH DN 200, std. temp up to 40°C, (100m) |
| BW-110-225 | CH DN 225, std. temp up to 40°C, (100m) |
| CJ-111-075 | CH Light duty stitch 80° Ø075 (100m) |
| CJ-111-100 | CH Light duty stitch 80° Ø100 (100m) |
| CJ-111-125 | CH Light duty stitch 80° Ø125 (100m) |
| CJ-111-150 | CH Light duty stitch 80° Ø150 (100m) |
| CJ-111-200 | CH Light duty stitch 80° Ø200 (100m) |
| CJ-111-225 | CH Light duty stitch 80° Ø225 (100m) |
| CJ-111-250 | CH Light duty stitch 80° Ø250 (100m) |
| CJ-111-300 | CH Light duty stitch 80° Ø300 (100m) |
| S6-100-099 | CH Light duty stitch Clear DN75 (100m) |
| S6-100-101 | CH Light duty stitch Clear DN100 (100m) |
| S6-100-103 | CH Light duty stitch Clear DN125 (100m) |
| S6-100-104 | CH Light duty stitch Clear DN150 (100m) |
| S6-100-106 | CH Light duty stitch Clear DN225 (100m) |



AVAILABLE IN ALL SIZES

JUBILEE HOSE CLAMPS

The Hose clamps are threaded throughout the entire steel strap to handle multiple dimensions. Used for attaching the liner to the Inversions, or the pull strap to the liner.

END CAP SYSTEM



MOUNTING FIXTURE

When preparing for open-ended installation, a mounting fixture is used when gluing the omaplata to the liner.



GLUED END

The glued end is used on installations where you don't want, or have the possibility to cut away the far end of the liner. For example from the house out to the main. The Omaplata hose is used as an extension of the liners coating that protrudes the liners far end, and is retracted after curing. This leaves the liner open and there is no need for further work.

Omaplata

| | |
|------------|------------------------|
| S3-304-050 | Omaplata Ø 50 |
| S3-304-075 | Omaplata Ø 75/67-105 |
| S3-304-100 | Omaplata Ø 100/90-141 |
| S3-304-150 | Omaplata Ø 150/130-205 |

Mounting fixture

| | |
|------------|------------------------|
| S3-381-075 | Mounting fixture Ø 75 |
| S3-381-100 | Mounting fixture Ø 100 |
| S3-381-125 | Mounting fixture Ø 125 |
| S3-381-150 | Mounting fixture Ø 150 |



STEAM GLUE

Steam Glue is a thermal adhesive that is cured at about 60°Celsius. It is used for gluing the Omaplata to the liner coating, when making a glued end. A heat gun is used to cure the glue. Steam glue can also be used in applications where heat curing is used.

Steam glue

| | |
|------------|-------------------|
| S5-151-011 | Steam Glue 50ml |
| S5-151-010 | Steam Glue 300 ml |

TRAINING

PIPE REHABILITATION FOR HOUSES

More than 300 installers have completed our popular training on how to install liners and branch pipes.

We have recently freed up more “fun time” by having the participants do the majority of the theoretical part online, before arriving in Falun or Kaarina. What that means is that we have almost three full days of practical exercises together. We cover everything from A-Z when it comes to rehabilitate a pipe using liners.

Our education focuses on the finished result. We want you to skip those thirty-some years that we have used for developing the technique and materials. You should take it from here, and into the future.

Our training includes:

- Descaling of pipes
- Installation methods – the does and don'ts
- Liners and resins
- All curing methods covered – UV- fastest there is, Steam, Hot water and Ambient
- Robot cutting / reinstatements
- Recovery – damage control
- Branch pipes – from main as well as from the branch arm
- Safe epoxy handling
- Installation protocols
- Introduction to DANCUTTER equipment .
- Introduction to SEWERTRONICS equipment.
- Introduction to HOUSELINER material.

We use these brands and more when we carry out our training courses



BOOK YOUR TRAINING



<https://sacpro.se/en/training/>

Basically, we want you to feel safe and secure when installing liners. You should feel that it works perfectly, every single time you do an installation.

If preferred we can adjust the length of the education as well as the content of it.

LOCATION

The educations are hosted in Falun, Sweden by Freddy or Jockum or, in Kaarina, Finland by Ville.

REGISTRATION

Registration by e-mail to info@sacpro.se or by filling out the form on our website:

www.sacpro.se/en/training



ONGOING TRAINING



THREE-STOREY TRAINING APARTMENT





SACPRO HQ, FALUN - SWEDEN

SACPRO IS A LEADING SUPPLIER FOR THE PIPE REHABILITATION INDUSTRY

Sacpro AB is Scandinavia's leading supplier of tools and materials for piperehabilitation of sewage and sewage systems in and out of buildings. We have developed four brands - Saccpipe®, Saccparts®, Sactools®, and Houseliner®. With our brands and close cooperation with the leading European brand Brawoliner®, Sacpro represents a complete pipe rehabilitation system - Houseliner System.

MANY YEARS OF EXPERIENCE

The company have over 30 years of experience of pipe rehabilitation inside buildings. First as an entrepreneur around Sweden and since 2005, only as a manufacturer and supplier. Sacpro was one of the first in the world that took pipe rehabilitation inside buildings with both liner and branch pipes installation. We are now continuing our journey with innovative and reliable products, fast deliveries and excellent support.

For more information go to our webpage:

www.sacpro.se



1991



1996



SACRAB TEAM 1998

Disclaimer

All contents of this document are obtained without warranties of any kind, either expressed or implied. Sacpro AB can not be liable for any direct, indirect, or incidental damages arising from access to or use of this document.

Copyright © 2024 Sacpro AB

The contents of this document may not be reproduced, copied, modified or distributed without written permission from Sacpro AB. Material may under no circumstances be used for commercial purposes. This includes everything in this document, both texts and images.

Trademarks

Houseliner® Sactools®, Saccparts® and Saccpipe® are registered trademarks by Sacpro AB. All brands and all content in this document are protected by copyright laws unless otherwise is stated and may not be used without prior written consent of Sacpro.

MATERIALS, EQUIPMENT & TRAINING
TRENCHLESS PIPE REHABILITATION

MATERIALS, EQUIPMENT & TRAINING

TRENCHLESS PIPE REHABILITATION

SACPRO

www.sacpro.se | www.sacpro.fi
www.houseliner.se

